



**Bethlehem Lutheran Church
& Early Childhood Center**



DISCIPLESHIP

Season After Pentecost

September 4, 2022

Worship Services

9:00 am | 10:30 am

Welcome to Bethlehem!

We hope you feel a warm welcome at Bethlehem. Please visit our website at www.blcenc.org for more information about the congregation. If you're visiting with us, please fill out an information card and place it in the offering basket so we can stay connected.

CHILDREN

All children are welcome in worship at Bethlehem Lutheran Church (BLC). There is a comfort room at the back of the sanctuary. Busy bags are available in the narthex. During our 10:30 AM service, after Children's Time, children ages 3 years – 6th grade may either attend our Learning Circle program or remain with you (currently on hiatus for summer).

COMMUNION

We practice **open communion** meaning all are welcome to participate. We commune by intinction. The pastor will dip the bread (or gluten-free wafer) into a divided chalice that has white wine or red grape juice. We are happy to bring communion to individuals with limited mobility.

ACCESSIBILITY

Hearing assistance devices are located at the back of the sanctuary, and reading glasses are available in the narthex.

PARTICIPATION

The different movements that happen during worship (sitting, standing, making the sign of the cross) are all optional; please engage as you are comfortable or able.

ACKNOWLEDGEMENTS

From *Evangelical Lutheran Worship*, "Holy Communion, Setting Six" - "This Is The Feast" - John W. Arthur, Joel Martinson, Text: © 1970, Augsburg Fortress, Tune: © 2004 Augsburg Fortress; "Alleluia" - Text and Tune: Unknown, transcription © 1989 The United Methodist Publishing House;" Holy, Holy" Tune: Unknown, Zimbabwe, © United Methodist Church Music Service; "Lamb of God" - Tune: Fintan O'Carroll, Christopher Walker, © 1985 OCP Publications. "Will You Come and Follow Me (The Summons)" - Text: John L. Bell, b. 1949; Tune KELVINGROVE: Scottish traditional, © 1987 The Iona Community, admin. GIA Publications, Inc. "Come, Let Us Eat" - Text: Billema Kwilla, b. 1925, sts. 1-3, Gilbert E. Doan, Jr., b. 1930, st. 4, tr. Margaret D. Miller, b. 1927, © 1978 Augsburg Fortress Publishers; Tune A VA DE: Billema Kwilla, © 1972 Augsburg Fortress Publishers. "The Lord Now Sends Us Forth" - Text: Anonymous, Central America, tr. Gerhard M. Cartford, b. 1923, © 1998 Augsburg Fortress Publishers; Tune ENVIADO: Anonymous, Central America, Public Domain. For previous copyrighted selections, all rights reserved. Reprinted under OneLicense.net License No. A-706214. "Lord, I Lift Your Name on High" - Text and Tune: Rick Founds, b. 1954, © 1989 Brentwood Benson Publishing. All rights reserved.Reprint authorized under CCLI License #1085183. Permission to podcast/stream the music in this service obtained from One License with license #A-706214.
Photo Credit: <https://www.abhe.org/whole-life-discipleship/>

GATHERING

WELCOME

CONFESSION AND FORGIVENESS

L: Gracious and loving God, open our hearts so that we are able to admit to you the fullness of our lives – that which is beautiful and good, and that which is hurtful and hateful. Let us confess our sin in the presence of God and of one another.

Silence is kept for reflection.

L: Merciful God,

C: We confess that we do not follow Jesus in all that we do. We love with condition. We judge and condemn. We cast the first stone, and keep the logs in our own eyes. We do not turn to You as the source of our healing. Forgive us, we pray. Forgive our sin, and empower us to be imitators of Christ in love and service.

L: Friends in Christ, know this: the mercy of God is from everlasting to everlasting. May we always be reminded of the surpassing and surprising grace that we have in Jesus Christ, and know that by his love we are forgiven of all our sins.

C: Amen.

GATHERING HYMN

Lord I Lift Your Name On High – ELW 857

Lord, I lift Your name _ on high; Lord, I love to sing _ Your
prais - es. _ I'm so glad You're in _ my life; I'm so glad You came _ to
save _ us. _ You came from heav - en to earth _ to show the way,
_ from the earth _ to the cross _ my debt to pay; _ From the cross _ to the grave, .
_ from the grave _ to the sky; _ Lord, I lift Your name _ on high.

GREETING

L: The grace of our Lord Jesus Christ, the love of God, and the communion of the Holy Spirit, be with you all.

C: And also with you.

Refrain



This is the feast of vic-to-ry for our God.



Al - le - lu - ia, al - le - lu - ia.



2 Sing with all the peo - ple of God, and



join in the hymn of all cre - a - tion:



Bless - ing, hon - or, glo - ry, and might be to



God and the Lamb for - ev - er. A - men.

Final refrain



This is the feast of vic-to-ry for our God.



Al - le - lu - ia, al - le - lu - ia.



This is the feast of vic - to - ry for our God.



Al - le - lu - ia, al - le - lu - ia.

PRAYER OF THE DAY

L: Let us pray ...

C: Amen.

CHILDREN'S TIME

WORD

SCRIPTURE READING


Deuteronomy 30:15-20

R: The Word of the Lord.

C: Thanks be to God.

GOSPEL ACCLAMATION

ELW pg. 171



Al - le - lu - ia. Lord, to whom shall we go?



You have the words of e - ter - nal life. Al - le - lu - ia.

GOSPEL READING

Luke 14:25-33

R: The Gospel of the Lord

C: Praise to you, O Christ

SERMON

Pastor Laura Ziehl

HYMN OF THE DAY

Will You Come and Follow Me – ELW 798



1 "Will you come and fol - low me if I but call
 2 "Will you leave your - self be - hind if I but call
 5 Lord, your sum - mons ech - oes true when you but call



your name? Will you go where you don't
 your name? Will you care for cruel and
 my name. Let me turn and fol - low



know and nev - er be the same?
 kind and nev - er be the same?
 you and nev - er be the same.



Will you let my love be shown, will you let my
 Will you risk the hos - tile stare, should your life at -
 In your com - pa - ny I'll go where your love and



name be known, will you let my life be
 tract or scare? Will you let me an - swer
 foot - steps show. Thus I'll move and live and



grown in you and you in me?"
 pray'r in you and you in me?"
 grow in you and you in me.

PRAYERS OF THE PEOPLE

L: Lord in your mercy,

C: Hear our prayer.

THE SHARING OF THE PEACE

L: The peace of the Lord be with you always. C: **And also with you!**

OFFERING AND THANKSGIVING

OFFERTORY RESPONSE

ELW pg. 173

Ho-ly, ho - ly, ho - ly Lord, Lord God of pow-er and might,
heav - en and earth are full of your glo - ry. Ho -
san - na in the high - est. Bless - ed is he who
comes in the name of the Lord. Ho - san - na in the high - est.

MEAL

GREAT THANKSGIVING & WORDS OF INSTITUTION

L: The Lord be with you,

C: **And also with you.**

L: Lift up your hearts,

C: **We lift them to the Lord.**

L: Let us give thanks to the Lord our God.

C: **It is right to give our thanks and praise.**

Our Father, who art in heaven, hallowed be thy name,
 thy kingdom come, thy will be done,
 on earth as it is in heaven.

Give us this day our daily bread; and forgive us our trespasses,
 as we forgive those who trespass against us;
 and lead us not into temptation, but deliver us from evil.

For thine is the kingdom, and the power, and the glory,
 forever and ever. Amen.

MUSIC DURING COMMUNION

Lamb of God, you take a-way the sin of the world; have

mer-cy on us. Lamb of God, you take a-way the sin of the

world; have mer - cy on us. Lamb of God, you take a -

way the sin of the world; grant us peace, grant us peace.

COMMUNION HYMN

Come Let Us Eat – ELW 491

Leader or All



- 1 Come, let us eat, for now the feast is spread,
- 2 Come, let us drink, for now the wine is poured,
- 3 In Je - sus' pres - ence now we meet and rest,
- 4 Rise, then, to spread a - broad God's might - y word,

All



come, let us eat, for now the feast is spread.
come, let us drink, for now the wine is poured.
in Je - sus' pres - ence now we meet and rest.
rise, then, to spread a - broad God's might - y word.

Leader or All



Our Lord's bod - y let us take to - geth - er,
Je - sus' blood poured let us drink to - geth - er,
In the pres - ence of our Lord we gath - er,
Je - sus ris - en will bring in the king - dom,

All



our Lord's bod - y let us take to - geth - er.
Je - sus' blood poured let us drink to - geth - er.
in the pres - ence of our Lord we gath - er.
Je - sus ris - en will bring in the king - dom.

SENDING

ANNOUNCEMENTS

BLESSING

SENDING HYMN

The Lord Now Sends Us Forth – ELW 538



En - via - do soy de Dios, mi ma - no lis - ta es - tá
 The Lord now sends us forth with hands to serve and give,



pa - ra cons - truir con él un mun - do fra - ter - nal.
 to make of all the earth a bet - ter place to live.



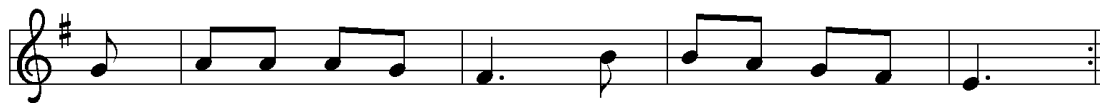
Los án - ge - les no son en - via - dos a cam - biar
 The an - gels are not sent in - to our world of pain



un mun - do de do - lor por un mun - do me - jor;
 to do what we were meant to do in Je - sus' name;



me ha to - ca - do a mí ha - cer - lo rea - li - dad.
 that falls to you and me and all who are made free.



A - yú - da - me, Se - ñor, a ha - cer tu vo - lun - tad.
 Help us, O Lord, we pray, to do your will to - day.

DISMISSAL

L: Go in peace, love your neighbor!

C: Thanks be to God!

All Are Welcome!

We live in a diverse world. We are hurting, broken and heavy hearted. We are loving, celebrating, and above all — we are welcoming. Regardless of the color of your skin or the color of your hair, regardless of your gender identity, sexual orientation, relationship status, or political affiliation — you are welcome here.

If you are a believer, a doubter or a seeker after Christ — you have a place here.

If you own, rent, or have nothing at all — you are welcome here.

If you are fully abled, disabled, or a person of differing abilities, if you have regrets, fears, addictions, or afflictions — you have a place here.

All who are wise and all who are confused, all who have found love and all who have lost it, all who celebrate this welcome statement and all who fear it — are welcome here.

For these are all of the things that make you who you are: the person God loves. Come as you are and be celebrated for who you are. The time is now. Your place is here. Bethlehem Lutheran Church is an all-inclusive church.



Reconciling in Christ



**Evangelical Lutheran
Church in America**

God's work. Our hands.

Electronic Giving at Bethlehem

Offering gifts can be made electronically on our website www.blcenc.org by clicking on the contribute tab, or by scanning this QR code. There are options for one-time donations, as well as recurring gifts and special offerings. **No account is needed to donate on our website.**



You can also use the **Vanco Mobile App**. Simply download it from your app store, and search "Bethlehem Lutheran Church Encinitas" by name (there is no invite code). If you already have an account from our website, the same login information will work. If not, please sign up with a new account.

Thank You for Supporting Bethlehem!