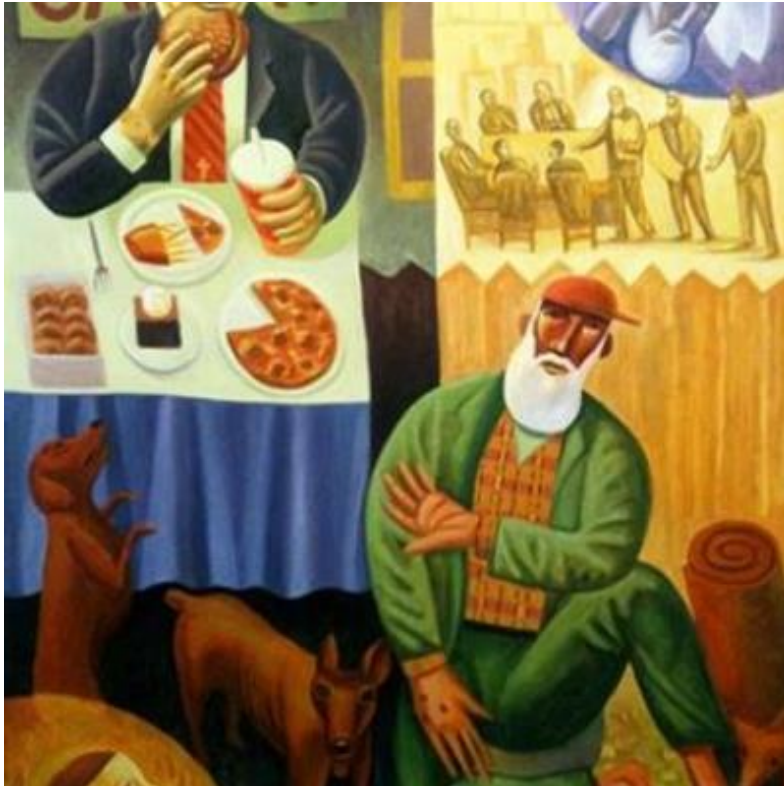




Bethlehem Lutheran Church & Early Childhood Center



Season After Pentecost

September 25, 2022

Worship Service

8:30 am

Welcome to Bethlehem!

We hope you feel a warm welcome at Bethlehem. Please visit our website at www.blcenc.org for more information about the congregation. If you're visiting with us, please fill out an information card and place it in the offering basket so we can stay connected.

CHILDREN

All children are welcome in worship at Bethlehem Lutheran Church (BLC). There is a comfort room at the back of the sanctuary. Busy bags are available in the narthex. During our 10:30 AM service, after Children's Time, children ages 3 years – 6th grade may either attend our Learning Circle program or remain with you.

COMMUNION

We practice **open communion** meaning all are welcome to participate. We commune by intinction. The pastor will dip the bread (or gluten-free wafer) into a divided chalice that has white wine or red grape juice. We are happy to bring communion to individuals with limited mobility.

ACCESSIBILITY

Hearing assistance devices are located at the back of the sanctuary, and reading glasses are available in the narthex.

PARTICIPATION

The different movements that happen during worship (sitting, standing, making the sign of the cross) are all optional; please engage as you are comfortable or able.

ACKNOWLEDGEMENTS

From *Evangelical Lutheran Worship*, "**Holy Communion, Setting Six**" - "**This Is The Feast**" - John W. Arthur, Joel Martinson, Text: © 1970, Augsburg Fortress, Tune: © 2004 Augsburg Fortress; "**Alleluia**" - Text and Tune: Unknown, transcription © 1989 The United Methodist Publishing House.; "**Holy, Holy**" Tune: Unknown, Zimbabwe, © United Methodist Church Music Service; "**Lamb of God**" - Tune: Fintan O'Carroll, Christopher Walker, © 1985 OCP Publications. "**What Is This Place**" - Text: Huub Oosterhuis, b. 1933, tr. David Smith, b. 1933; Tune KOMT MET ZANG: A. Valerius, *Nederlandsch Gedenckelanc*, 1626, arr. Adrian Engels, b. 1906; Text and Arr. © 1984 OCP. "**Take My Life, That I May Be**" - Text: Frances R. Havergal, 1836-1879, adapt. Spanish text: Vicente Mendoza, 1875-1955, Public Domain; Tune TOMA MI VOLUNTAD: William Dexheimer Pharris, b. 1956, arr. Mark Sedio, b. 1954, © 1999 Augsburg Fortress Publishers. "**Have You Thanked the Lord**" - Text and Tune LAMOTTA: Bill LaMotta, 1919-1980. © 1999 Augsburg Fortress. For previous copyrighted selections, all rights reserved. Reprinted under OneLicense.net License No. A-706214. Permission to podcast/stream the music in this service obtained from One License with license #A-706214.
Photo Credit: <https://www.holytrinityutrecht.nl/sermon-book/luke-1619-31/>

GATHERING

WELCOME

CONFESSION AND FORGIVENESS

L: Gracious and loving God, open our hearts so that we are able to admit to you the fullness of our lives – that which is beautiful and good, and that which is hurtful and hateful. Let us confess our sin in the presence of God and of one another.

Silence is kept for reflection.

L: Merciful God,

C: We confess that we do not follow Jesus in all that we do. We love with condition. We judge and condemn. We cast the first stone, and keep the logs in our own eyes. We do not turn to You as the source of our healing. Forgive us, we pray. Forgive our sin, and empower us to be imitators of Christ in love and service.

L: Friends in Christ, know this: the mercy of God is from everlasting to everlasting. May we always be reminded of the surpassing and surprising grace that we have in Jesus Christ, and know that by his love we are forgiven of all our sins.

C: Amen.

GATHERING HYMN

What Is This Place – ELW 524 vs. 1 & 3



1 What is this place where we meet - ing? On - ly a house, the
2 Words from a - far, stars that are fall - ing, sparks that are sown in
3 And we ac - cept bread at this ta - ble, bro - ken and shared, a



earth its floor. Walls and a roof shel - ter - ing peo - ple,
us like seed: names for our God, dreams, signs and won - ders
liv - ing sign. Here in this world, dy - ing and liv - ing,



win-dows for light, an o - pen door. Yet it be-comes a bod - y that lives
sent from the past are all we need. We in this place re - mem-ber and speak
we are each oth-er's bread and wine. This is the place where we can re-ceive



when we are gath - ered here, and know our God is near.
a - gain what we have heard: God's free re - deem-ing word.
what we need to in - crease: our jus - tice and God's peace.

GREETING

L: The grace of our Lord Jesus Christ, the love of God, and the communion of the Holy Spirit, be with you all.

C: And also with you.

Refrain

This is the feast of vic-to-ry for our God.

Al - le - lu - ia, al - le - lu - ia.

2 Sing with all the peo - ple of God, and

join in the hymn of all cre - a - tion:

Bless - ing, hon - or, glo - ry, and might be to

God and the Lamb for - ev - er. A - men.

This is the feast of vic-to-ry for our God.

Al - le - lu - ia, al - le - lu - ia.

This is the feast of vic - to - ry for our God.

Al - le - lu - ia, al - le - lu - ia.

PRAYER OF THE DAY

L: Let us pray ...

C: Amen.

CHILDREN'S TIME

WORD

SCRIPTURE READING


Psalm 146

R: The Word of the Lord.

C: Thanks be to God.

GOSPEL ACCLAMATION

ELW pg. 171



Al - le - lu - ia. Lord, to whom shall we go?



You have the words of e - ter - nal life. Al - le - lu - ia.

GOSPEL READING

Luke 16:19-31

R: The Gospel of the Lord

C: Praise to you, O Christ

SERMON

Pastor Laura Ziehl

HYMN OF THE DAY

Take My Life, That I May Be – ELW 583

Refrain/Estribillo



To - ma, oh Dios, mi vo - lun - tad, y haz - la tu - ya, na -
 Take my life, that I may be con - se - crat - ed, Lord,



da más; to - ma, sí, mi co - ra - zón
 to thee; take my mo - ments and my days;



y tu tro - no en él ten - drás. ten - drás.
 let them flow in cease - less praise. less praise.



1 Take my hands and let them move
 4 Take my will and make it thine;



at the im - pulse of thy love;
 al - ways, on - ly for my King;



take my feet and let them be swift and
 take my heart, it is thine own; it shall



beau - ti - ful for thee.
 be thy roy - al throne.

PRAYERS OF THE PEOPLE

L: Lord in your mercy,

C: Hear our prayer.

THE SHARING OF THE PEACE

L: The peace of the Lord be with you always. C: **And also with you!**

OFFERING AND THANKSGIVING

OFFERTORY RESPONSE

ELW pg. 173

Ho-ly, ho - ly, ho - ly Lord, Lord God of pow-er and might,
heav - en and earth are full of your glo - ry. Ho -
san - na in the high - est. Bless - ed is he who
comes in the name of the Lord. Ho - san - na in the high - est.

MEAL

GREAT THANKSGIVING & WORDS OF INSTITUTION

L: The Lord be with you,

C: **And also with you.**

L: Lift up your hearts,

C: **We lift them to the Lord.**

L: Let us give thanks to the Lord our God.

C: **It is right to give our thanks and praise.**

THE LORD'S PRAYER

ELW pg. 112

**Our Father, who art in heaven, hallowed be thy name,
thy kingdom come, thy will be done,
on earth as it is in heaven.**

**Give us this day our daily bread; and forgive us our trespasses,
as we forgive those who trespass against us;
and lead us not into temptation, but deliver us from evil.**

**For thine is the kingdom, and the power, and the glory,
forever and ever. Amen.**

Lamb of God, you take a-way the sin of the world; have
mer-cy on us. Lamb of God, you take a-way the sin of the
world; have mer - cy on us. Lamb of God, you take a -
way the sin of the world; grant us peace, grant us peace.

COMMUNION HYMN

Special Music

SENDING

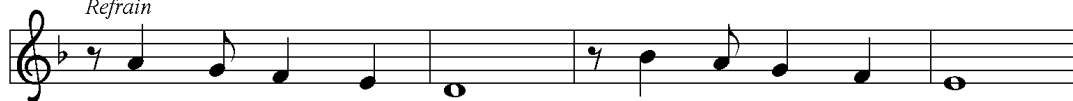
ANNOUNCEMENTS

BLESSING

SENDING HYMN

Have You Thanked The Lord – ELW 829 vs. 1 & 3

Refrain



Have you thanked the Lord? Have you praised God's name?



Don't you know that no to - mor - row is quite the same?



Have you thanked the Lord? Have you knelt in prayer,



and re-joiced that, rain or sun-shine, our God is there?



- 1 Hal - le - lu - jah! Thank the Lord for sun, sand, and sea,
- 2 Hal - le - lu - jah! Par - a - dise we taste where we are;
- 3 Hal - le - lu - jah! Joy and peace the Sav - ior will bring.



ev - 'ry star at night that shines for you and me.
 sum-mer breez - es, win - ter warmth are nev - er far.
 Grace a - maz - ing! So we lift our voice and sing,



Bless - ings so man - y come our way:
 God's love is ev - er on dis - play:
 grate - ful when clouds are bright or gray:

Refrain



have you thanked the Lord to - day?
 have you thanked the Lord to - day?
 have you thanked the Lord to - day?

DISMISSAL

L: Go in peace, love your neighbor!

C: Thanks be to God!

All Are Welcome!

We live in a diverse world. We are hurting, broken and heavy hearted. We are loving, celebrating, and above all — we are welcoming. Regardless of the color of your skin or the color of your hair, regardless of your gender identity, sexual orientation, relationship status, or political affiliation — you are welcome here.

If you are a believer, a doubter or a seeker after Christ — you have a place here.

If you own, rent, or have nothing at all — you are welcome here.

If you are fully abled, disabled, or a person of differing abilities, if you have regrets, fears, addictions, or afflictions — you have a place here.

All who are wise and all who are confused, all who have found love and all who have lost it, all who celebrate this welcome statement and all who fear it — are welcome here.

For these are all of the things that make you who you are: the person God loves. Come as you are and be celebrated for who you are. The time is now. Your place is here. Bethlehem Lutheran Church is an all-inclusive church.



Reconciling in Christ



**Evangelical Lutheran
Church in America**

God's work. Our hands.

Electronic Giving at Bethlehem

Offering gifts can be made electronically on our website www.blcenc.org by clicking on the contribute tab, or by scanning this QR code. There are options for one-time donations, as well as recurring gifts and special offerings. **No account is needed to donate on our website.**



You can also use the **Vanco Mobile App**. Simply download it from your app store, and search "Bethlehem Lutheran Church Encinitas" by name (there is no invite code). If you already have an account from our website, the same login information will work. If not, please sign up with a new account.

Thank You for Supporting Bethlehem!