



Bethlehem Lutheran Church & Early Childhood Center



First Sunday of Advent

November 27, 2022

Worship Services

9:00 am | 10:30 am

Welcome to Bethlehem!

We hope you feel a warm welcome at Bethlehem. Please visit our website at www.blcenc.org for more information about the congregation. If you're visiting with us, please fill out an information card and place it in the offering basket so we can stay connected.

CHILDREN

All children are welcome in worship at Bethlehem Lutheran Church (BLC). There is a comfort room at the back of the sanctuary. Busy bags are available in the narthex. During our 10:30 AM service, after Children's Time, children ages 3 years – 6th grade may either attend our Learning Circle program or remain with you. Nursery care is available for young children during the 10:30 AM service. Ask the host for more information.

COMMUNION

We practice **open communion** meaning all are welcome to participate. We commune by intinction. The pastor will dip the bread (or gluten-free wafer) into a divided chalice that has white wine or red grape juice. We are happy to bring communion to individuals with limited mobility.

ACCESSIBILITY

Hearing assistance devices are located at the back of the sanctuary, and reading glasses are available in the narthex.

PARTICIPATION

The different movements that happen during worship (sitting, standing, making the sign of the cross) are all optional; please engage as you are comfortable or able.

ACKNOWLEDGEMENTS

"Warm the Time of Winter" - Text: Ruth Duck, b. 1947, ©1992 GIA Publications, Inc.; Tune: Lori True, ©2000 GIA Publications, Inc. **"Awake! Awake, and Greet the New Morn"** - Text and Tune: Marty Haugen, b. 1950, ©1983 GIA Publications, Inc. **"Creator of the Stars of Night"** - Text: Latin hymn, 9th cent., tr. *Hymnal* 1940, ©985 Church Publishing, Inc.; Tune CONDITOR ALME SIDERUM: Plainsong mode V, Public Domain. **"He Came Down"** - Text: Cameroon traditional; Tune: Cameroon traditional, arr. John L. Bell, b. 1949, ©1990 WGRG (North America). **"Prepare the Royal Highway"** - Text: Frans Mikael Franzen, 1772-1847, tr. *Lutheran Book of Worship*, ©1978 Augsburg Fortress Publishers; Tune BEREDEN VAG FOR HERRAN: Swedish, folk tune, 17th cent., Public Domain. For previous copyrighted selections, all rights reserved. Reprinted under OneLicense.net License No. A-706214. Other selections are in the Public Domain. Permission to podcast/stream the music in this service obtained from One License with license #A-706214. . Photo Credits: <http://jameshowellsweeklypreachingnotions.blogspot.com/2018/01/what-can-we-say-january-13-baptism-of.html>, <https://saintbridgetchurch.org/Resources/Announcements/articleType/ArticleView/articleId/10652/Advent-and-Christmas-Calendar-2016>

GATHERING

WELCOME

GATHERING HYMN

Warm the Time of Winter – 1 verse/week



1. When the wind of win - ter blows, bring - ing times of
2. When we shiv - er in des - pair, when the chill of
3. When in days of fall - en snow, change con - founds or



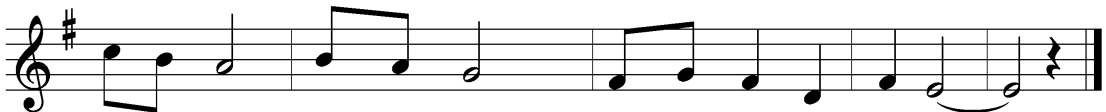
sol - i - tude, fill the si - lent, ic - y night;
death comes near, hold us, Spir - it, calm our fear,
love burns low, from the ash - es may there rise



be our hearts' com - pas - sion.
while the eve - ning deep - ens.
phoe - nix of our grow - ing.



Ho - ly light, warm our night; warm the time of win - ter.



Ho - ly light, warm our night; warm the time of win - ter.

L: Gracious God, as we prepare to celebrate the mystery of Christ's love, help us to make ready the way of Jesus, your Word in human form.

HYMN OF PRAISE

Kyrie

Cantor sings verses & congregation sings refrain

Refrain

Ky - ri - e, Ky - ri - e, Ky - ri - e e -

All

le - i - son. Ky - ri - e, Ky - ri - e,

Ky - ri - e e - le - i - son.

L: Holy God, grant us your peace, guide us on the way, and lead us into closer relationship with you.

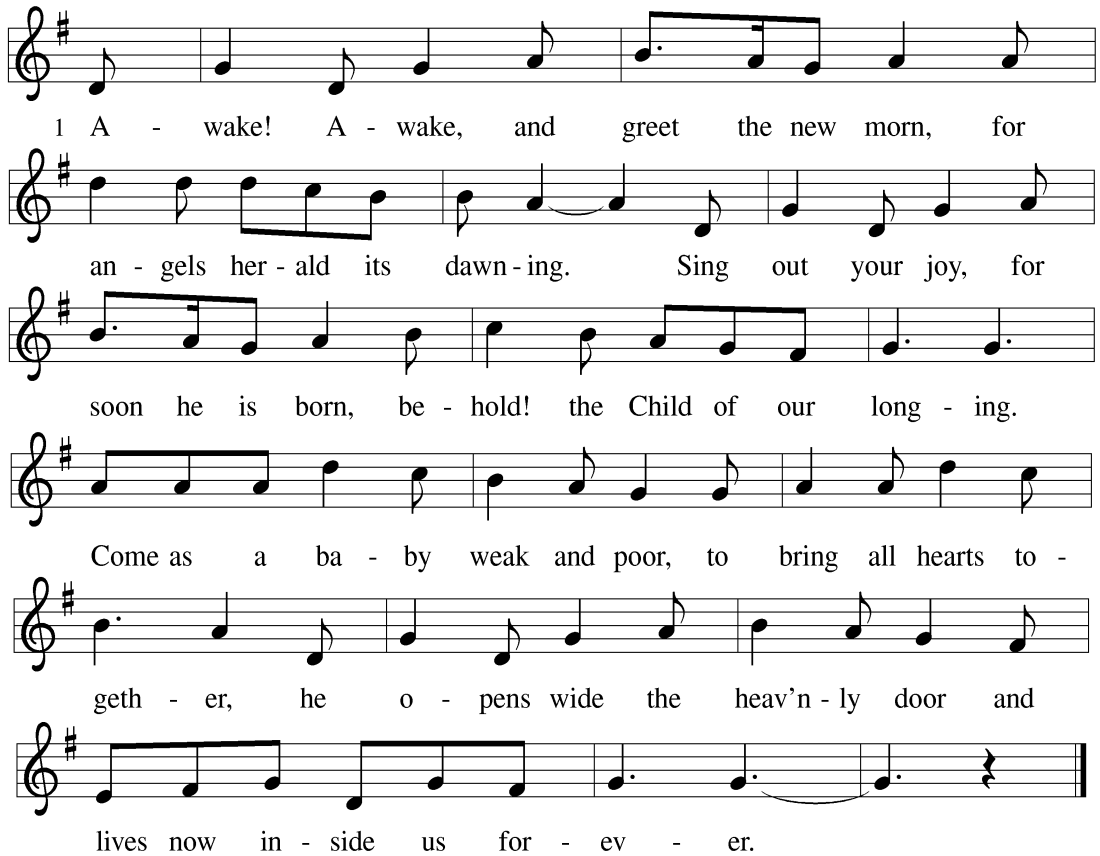
C: Amen.

ADVENT WREATH LIGHTING

This morning we light the first candle which reminds us that throughout history, God's people have spent time waiting, wandering, and wondering about the timing of God's eternal plan. Like the people of old, we long for God's presence to illuminate the areas of life where we are called to wait. This morning we echo the words of the Psalmist, "Wait for the Lord; be strong, and let your heart take courage; wait for the Lord!"

HYMN

Awake! Awake, and Greet the New Morn – ELW 242



1 A - wake! A - wake, and greet the new morn, for
an - gels her - ald its dawn - ing. Sing out your joy, for
soon he is born, be - hold! the Child of our long - ing.
Come as a ba - by weak and poor, to bring all hearts to -
geth - er, he o - pens wide the heav'n - ly door and
lives now in - side us for - ev - er.

PRAYER OF THE DAY

L: Let us pray ...

C: Amen.

CHILDREN'S TIME

WORD

SCRIPTURE READING

Isaiah 11:1-10

R: The Word of the Lord.

C: Thanks be to God.

GOSPEL ACCLAMATION

O Come, O Come, Emmanuel – ELW 257

1 verse/week



1 O come, O come, Em - man - u - el, and ran - som cap - tive
 2 O come, O Wis - dom from on high, em - brac - ing all things
 3 O come, O come, O Lord of might, as to your tribes on
 4 O come, O Branch of Jes - se, free your own from Sa - tan's



Is - ra - el, that mourns in lone - ly ex - ile here
 far and nigh: in strength and beau - ty come and stay;
 Si - nai's height in an - cient times you gave the law
 tyr - an - ny; from depths of hell your peo - ple save,



un - til the Son of God ap - pear.
 teach us your will and guide our way. Re-joice! Re-joice!
 in cloud, and maj - es - ty, and awe.
 and give them vic - t'ry o'er the grave.



Em - man - u - el shall come to you, O Is - ra - el.

GOSPEL READING

Matthew 3:1-12

R: The Gospel of the Lord

C: Praise to you, O Christ

SERMON

HYMN OF THE DAY

On Jordan's Bank the Baptist's Cry – ELW 249

Verses 1, 2, & 4



1 On Jor - dan's bank the Bap - tist's cry an - nounc - es
2 Then cleansed be ev - 'ry life from sin; make straight the
3 We hail you as our Sav - ior, Lord, our ref - uge
4 Stretch forth your hand, our health re - store, and make us
5 All praise to you, e - ter - nal Son, whose ad - vent



that the Lord is nigh; a - wake and heark - en,
way for God with - in, and let us all our
and our great re - ward; with - out your grace we
rise to fall no more; oh, let your face up -
has our free - dom won, whom with the Fa - ther



for he brings glad tid - ings of the King of kings!
hearts pre - pare for Christ to come and en - ter there.
waste a - way like flow'rs that with - er and de - cay.
on us shine and fill the world with love di - vine.
we a - dore, and Ho - ly Spir - it, ev - er - more.

PRAYERS OF THE PEOPLE

L: Lord in your mercy,

C: Hear our prayer.

THE SHARING OF THE PEACE

L: The peace of the Lord be with you always. C: And also with you!

OFFERING AND THANKSGIVING

OFFERTORY RESPONSE

He Came Down – ELW 253

2 verses/week



- 1 He came down that we may have love; he came down that we may have love;
- 2 He came down that we may have light; he came down that we may have light;
- 3 He came down that we may have peace; he came down that we may have peace;
- 4 He came down that we may have joy; he came down that we may have joy;



he came down that we may have love;
he came down that we may have light; hal - le - lu - jah for - ev - er - more.
he came down that we may have peace;
he came down that we may have joy;

MEAL

GREAT THANKSGIVING & WORDS OF INSTITUTION

- L: The Lord be with you, C: And also with you.
- L: Lift up your hearts, C: We lift them to the Lord.
- L: Let us give thanks to the Lord our God.
- C: It is right to give our thanks and praise.

THE LORD'S PRAYER

ELW pg. 112

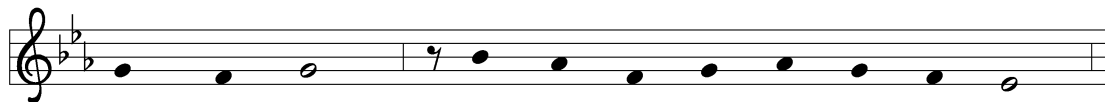
**Our Father, who art in heaven, hallowed be thy name,
thy kingdom come, thy will be done, on earth as it is in heaven.
Give us this day our daily bread; and forgive us our trespasses,
as we forgive those who trespass against us;
and lead us not into temptation, but deliver us from evil.
For thine is the kingdom, and the power, and the glory,
forever and ever. Amen.**

MUSIC DURING COMMUNION

Creator of the Stars of Night – ELW 245



1 Cre - a - tor of the stars of night, your peo - ple's ev - er -



last - ing light, O Christ, re - deem - er of us all,



we pray you hear us when we call.

COMMUNION HYMN

Comfort, Comfort Now My People – ELW 256



- 1 "Com - fort, com-fort now my peo - ple; tell of peace!" So says our God.
- 2 For the her - ald's voice is cry - ing in the des - ert far and near,
- 3 Straight shall be what long was crook - ed, and the rough - er plac - es plain.



Com-fort those who sit in dark - ness mourn-ing un - der sor - row's load.
call - ing us to true re - pen - tance, since the reign of God is here.
Let your hearts be true and hum - ble, as be-fits God's ho - ly reign.



To God's peo - ple now pro-claim that God's par - don waits for them!
Oh, that warn - ing cry o - bey! Now pre - pare for God a way.
For the glo - ry of the Lord now on earth is shed a - broad,



Tell them that their war is o - ver; God will reign in peace for - ev - er.
Val - leys, rise to greet the Sav - ior; hills, bow down in hum - ble fa - vor.
and all flesh shall see the to - ken that God's word is nev - er bro - ken.

SENDING

ANNOUNCEMENTS



ADVENT & CHRISTMAS SCHEDULE

Sun, Dec. 4 th	“A Christmas Carol”	9 & 10:30 AM
	Christmas Concert	4 PM
Wed, Dec. 14 th	Comfort at Christmas Service	7 PM
Sun, Dec. 18 th	Christmas Caroling	1 PM
Sat, Dec. 24 th	Candlelit Christmas Eve Services	10 AM, 7 & 9 PM
	Children’s Christmas Eve Service	4:30 PM
Sun, Dec. 25 th	One Sunday Morning Worship	10 AM
Sun, Jan. 1 st	One Sunday Morning Worship	10 AM

BLESSING

SENDING HYMN

Prepare the Royal Highway – ELW 264

Verses 1, 2, & 4



- 1 Pre - pare the roy - al high - way; the King of kings is near!
- 2 God's peo - ple, see him com - ing: your own e - ter - nal king!
- 3 Then fling the gates wide o - pen to greet your prom - ised king!
- 4 His is no earth - ly king - dom; it comes from heav'n a - bove.



Let ev - 'ry hill and val - ley a lev - el road ap - pear!
Palm branch - es strew be - fore him! Spread gar - ments! Shout and sing!
Your king, yet ev - 'ry na - tion its trib - ute too may bring.
His rule is peace and free - dom and jus - tice, truth, and love.



Then greet the King of glo - ry, fore - told in sa - cred sto - ry:
God's prom - ise will not fail you! No more shall doubt as - sail you!
All lands will bow be - fore him; their voic - es join your sing - ing:
So let your praise be sound - ing for kind - ness so a - bound - ing:

Refrain



Ho - san - na to the Lord, for he ful - fills God's word!

DISMISSAL

L: Go in peace, prepare the way!

C: Thanks be to God!

All Are Welcome!

We live in a diverse world. We are hurting, broken and heavy hearted. We are loving, celebrating, and above all — we are welcoming. Regardless of the color of your skin or the color of your hair, regardless of your gender identity, sexual orientation, relationship status, or political affiliation — you are welcome here.

If you are a believer, a doubter or a seeker after Christ — you have a place here.

If you own, rent, or have nothing at all — you are welcome here.

If you are fully abled, disabled, or a person of differing abilities, if you have regrets, fears, addictions, or afflictions — you have a place here.

All who are wise and all who are confused, all who have found love and all who have lost it, all who celebrate this welcome statement and all who fear it — are welcome here.

For these are all of the things that make you who you are: the person God loves. Come as you are and be celebrated for who you are. The time is now. Your place is here.

Bethlehem Lutheran Church is an all-inclusive church.



Reconciling in Christ



**Evangelical Lutheran
Church in America**

God's work. Our hands.

Electronic Giving at Bethlehem

Offering gifts can be made electronically on our website www.blcenc.org by clicking on the contribute tab, or by scanning this QR code. There are options for one-time donations, as well as recurring gifts and special offerings. **No account is needed to donate on our website.**



You can also use the **Vanco Mobile App**. Simply download it from your app store, and search "Bethlehem Lutheran Church Encinitas" by name (there is no invite code). If you already have an account from our website, the same login information will work. If not, please sign up with a new account.

Thank You for Supporting Bethlehem!