



# Bethlehem Lutheran Church & Early Childhood Center



7<sup>th</sup> Sunday After Epiphany

February 20, 2022

Worship Services

9:00 am Indoor | 10:30 am Outdoor

# GATHERING

WELCOME

THANKSGIVING FOR BAPTISM

L: Holy God, holy and merciful, holy and mighty, you are the river of life, you are the everlasting wellspring, you are the fire of rebirth.

**C: We give thanks to you for oceans and lakes, for rivers and streams. We shout praises to you for clouds and rain, for dew and snow.**

L: Your waters are below us, around us, above us: our life is born in you.

**C: You are the fountain of resurrection.**

L: We remember and proclaim the many stories of your saving waters. Noah and the animals survive the flood. Hagar discovers your well. The Israelites escape through the sea, and they drink from your gushing rock. Naaman washes his leprosy away, and the Samaritan woman will never be thirsty again.

**C: We thank you for your Word that saves us in this water. Breathe your Spirit into all who are gathered here, and into all creation. Illumine our days. Enliven our bones. Dry our tears.**

L: Wash away the sin within us, and drown the evil around us. Satisfy all our thirst with your living water, Jesus Christ, our Savior, who lives and reigns with you and the Holy Spirit, one God, now and forever.

**C: Amen.**



1 Peo - ple who walk in dark - ness have sought a light in the  
 2 How can we tell a heav - en from hell if ev - 'ry - one  
 3 Where is the sun? Oh, there will be none! The Lamb is the



heart of the dark - est night. Just when we thought all would be  
 dwells in the dark of night? Morn - ing dis - pels, gent - ly com -  
 one who is shin - ing bright, bids us to come! Life has be -



lost, we were drawn to the light of God.  
 pels, and we're drawn to the light of God.  
 gun when we're drawn to the light of God.

*Refrain*



Dawn is in sight! Gone is the night, drawn to the



light and the morn - ing. Glo - rious and bright, oh, what a



sight to be drawn to the light of God.

PRAYER OF THE DAY

L: Let us pray ...

C: Amen.

CHILDREN'S TIME



“But I say to you that listen, Love your enemies, do good to those who hate you, bless those who curse you, pray for those who abuse you. If anyone strikes you on the cheek, offer the other also; and from anyone who takes away your coat do not withhold even your shirt. Give to everyone who begs from you; and if anyone takes away your goods, do not ask for them again. Do to others as you would have them do to you. “If you love those who love you, what credit is that to you? For even sinners love those who love them. If you do good to those who do good to you, what credit is that to you? For even sinners do the same. If you lend to those from whom you hope to receive, what credit is that to you? Even sinners lend to sinners, to receive as much again. But love your enemies, do good, and lend, expecting nothing in return. Your reward will be great, and you will be children of the Most High; for he is kind to the ungrateful and the wicked. Be merciful, just as your Father is merciful.

“Do not judge, and you will not be judged; do not condemn, and you will not be condemned. Forgive, and you will be forgiven; give, and it will be given to you. A good measure, pressed down, shaken together, running over, will be put into your lap; for the measure you give will be the measure you get back.”

R: The Gospel of the Lord

**C: Praise to you, O Christ**

**SERMON**

Pastor Laura Ziehl

HYMN OF THE DAY

God, When Human Bonds Are Broken – ELW 603

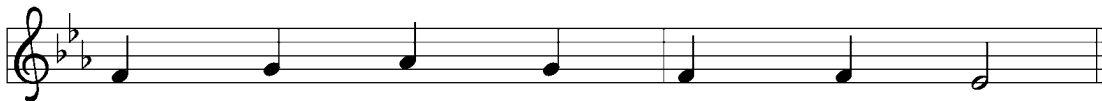
Verses 1, 2, 4, & 5



1 God, when hu - man bonds are bro - ken and we lack the  
 2 Through that still - ness, with your Spir - it come in - to our  
 3 You in us are bruised and bro - ken: hear us as we  
 4 Send us, God of new be - gin - nings, hum - bly hope - ful  
 5 Give us faith to be more faith - ful, give us hope to



love or skill to re - store the hope of heal - ing,  
 world of stress, for the sake of Christ for - giv - ing  
 seek re - lease from the pain of ear - lier liv - ing;  
 in - to life. Use us as a means of bless - ing:  
 be more true, give us love to go on learn - ing:



give us grace and make us still.  
 all the fail - ures we con - fess.  
 set us free and grant us peace.  
 make us stron - ger, give us faith.  
 God, en - cour - age and re - new!

## PRAYERS OF THE PEOPLE

L: Lord in your mercy,

C: Hear our prayer.

## THE SHARING OF THE PEACE

L: The peace of the Lord be with you always, C: And also with you!

## OFFERING OF OUR GIFTS AND OURSELVES

### OFFERTORY RESPONSE

As The Grains of Wheat – ELW 465

*Refrain*



As the grains of wheat once scat-tered on the hill were  
gath-ered in - to one to be - come our bread; so may all your peo-ple from  
all the ends of earth be gath-ered in - to one in you.

1 As this cup of bless-ing is shared with-in our midst,  
2 Let this be a fore-taste of all that is to come when

*Refrain*  
may we share the pres - ence of your love.  
all cre - a - tion shares this feast with you.

# MEAL

## GREAT THANKSGIVING & WORDS OF INSTITUTION

L: The Lord be with you,

C: And also with you.

L: Lift up your hearts,

C: We lift them to the Lord.

L: Let us give thanks to the Lord our God.

C: It is right to give our thanks and praise.

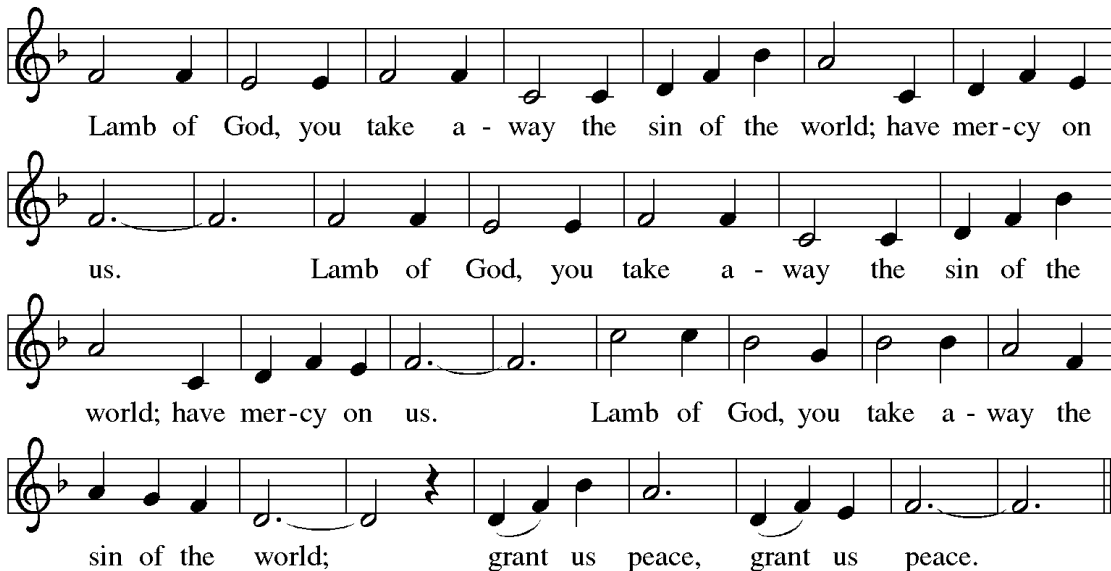
## THE LORD'S PRAYER

ELW pg. 112

Our Father, who art in heaven, hallowed be thy name,  
thy kingdom come, thy will be done, on earth as it is in heaven.  
Give us this day our daily bread; and forgive us our trespasses,  
as we forgive those who trespass against us;  
and lead us not into temptation, but deliver us from evil.  
For thine is the kingdom, and the power, and the glory,  
forever and ever. Amen.

## MUSIC DURING COMMUNION

Lamb of God – ELW 195



Lamb of God, you take a - way the sin of the world; have mer-cy on  
us. Lamb of God, you take a - way the sin of the  
world; have mer-cy on us. Lamb of God, you take a - way the  
sin of the world; grant us peace, grant us peace.



# COMMUNION HYMN

Come, Let Us Eat – ELW 491

Leader or All



1 Come, let us eat, for now the feast is spread,  
2 Come, let us drink, for now the wine is poured,  
3 In Je - sus' pres - ence now we meet and rest,  
4 Rise, then, to spread a - broad God's might - y word,

All



come, let us eat, for now the feast is spread.  
come, let us drink, for now the wine is poured.  
in Je - sus' pres - ence now we meet and rest.  
rise, then, to spread a - broad God's might - y word.

Leader or All



Our Lord's bod - y let us take to - geth - er,  
Je - sus' blood poured let us drink to - geth - er,  
In the pres - ence of our Lord we gath - er,  
Je - sus ris - en will bring in the king - dom,

All



our Lord's bod - y let us take to - geth - er.  
Je - sus' blood poured let us drink to - geth - er.  
in the pres - ence of our Lord we gath - er.  
Je - sus ris - en will bring in the king - dom.

## SENDING

ANNOUNCEMENTS

BLESSING



- 1 In Christ there is no east or west, in him no south or north,
- 2 In Christ shall true hearts ev-'ry-where their high com-mu-nion find;
- 3 Join hands, dis-ci-ples of the faith, what-e'er your race may be.
- 4 In Christ now meet both east and west, in him meet south and north;



but one com-mu-ni-ty of love through-out the whole wide earth.  
his ser-vice is the gold-en cord close bind-ing hu-man-kind.  
All chil-dren of the liv-ing God are sure-ly kin to me.  
all Christ-ly souls are one in him through-out the whole wide earth.

## DISMISSAL

L: Go with Christ into a weary world, and share the Good News.

C: **Thanks be to God!**



Bethlehem Lutheran Church  
& Early Childhood Center

## Electronic Giving Options Update

- Our Give Plus+ App has been replaced by **Vanco Mobile App!** **Vanco Mobile App** will be your new mobile means of financially supporting Bethlehem. To begin using it:
  - Download the “**Vanco Mobile**” app from your App Store using your smartphone or tablet
  - Search for Bethlehem Lutheran Church **Encinitas** by name
  - If you already have an account, your Username and Password remain the same. And your prior online account information and recurring gifts will automatically carry over
  - If you don’t have an account, follow the app’s “Sign Up” prompts
- BLC Website
  - Go to BLCENC.org and select the “Contribute” tab from the top menu as before
  - Click the “Give Now” button to go to our new and improved Vanco Online page.

\*\*\*\*\*

- With either option you can:
  - Use a checking account, or credit & debit cards
  - Choose to cover the credit card transaction fee
  - Make recurring, or one-time donations
  - Give to the general or various special funds
  - All donations appear on your giving statements

**Thank You for Supporting Bethlehem!**

# All Are Welcome!

We live in a diverse world. We are hurting, broken and heavy hearted. We are loving, celebrating, and above all — we are welcoming. Regardless of the color of your skin or the color of your hair, regardless of your gender identity, sexual orientation, relationship status, or political affiliation — you are welcome here.

If you are a believer, a doubter or a seeker after Christ — you have a place here.

If you own, rent, or have nothing at all — you are welcome here.

If you are fully abled, disabled, or a person of differing abilities, if you have regrets, fears, addictions, or afflictions — you have a place here.

All who are wise and all who are confused, all who have found love and all who have lost it, all who celebrate this welcome statement and all who fear it — are welcome here.

For these are all of the things that make you who you are: the person God loves. Come as you are and be celebrated for who you are. The time is now. Your place is here.

Bethlehem Lutheran Church is an all-inclusive church.



Reconciling in Christ



**Evangelical Lutheran  
Church in America**

God's work. Our hands.

Offering gifts can be made electronically, either on our website at [www.blcenc.org](http://www.blcenc.org) by clicking on the contribute tab, or by using the **Vanco Mobile App**. There are options for one-time donations, as well as recurring gifts and special offerings.

## ACKNOWLEDGEMENTS

**"Drawn to the Light"** - Text and Tune LA CROSSE: John C. Ylvisaker, b. 1937, © 1990 John C. Ylvisaker. **"You Have Put On Christ"** - Text: International Commission on English in the Liturgy, © 1969; Tune: Howard Hughes, b. 1930; Tune: © 1977, ICEL. **"As the Grains of Wheat"** - Text: Didache, 2nd cent., Martyr Haugen, b. 1950; and Tune: Martyr Haugen, © 1990 GIA Publications, Inc. **"Lamb of God"** - Tune: Jeremy Young, b. 1948, Tune: © 1995 Augsburg Fortress. **"God, When Human Bonds Are Broken"** - Text: Fred Kaan, b. 1929, © 1989 Hope Publishing Company; Tune MERTON: William H. Monk, 1823-1889, Public Domain. **"Come, Let Us Eat"** - Text: Billema Kwilla, b. 1925, Gilbert E. Doan, Jr., b. 1930, Margaret D. Miller, b. 1927, © 1978 Augsburg Fortress Publishers; Tune A VA DE: Billema Kwilla, © 1972 Augsburg Fortress Publishers. **"In Christ There Is No East or West"** - Text: John Oxenham, 1852-1941; Tune MCKEE: African American spiritual, adapt. Harry T. Burleigh, 1866-1949; Both Public Domain. For copyrighted selections, all rights reserved. Reprinted under OneLicense.net License No. A-706214. Permission to podcast/stream the music in this service obtained from One License with license #A-706214.

Photo Credit: <https://stmatthias-milw.org/2019/02/seventh-sunday-in-ordinary-time-2/>

925 Balour Drive, Encinitas, CA 92024

760•753•1026 | [info@blcenc.org](mailto:info@blcenc.org) | [www.blcenc.org](http://www.blcenc.org)