



Bethlehem Lutheran Church & Early Childhood Center



6th Sunday After Epiphany

February 13, 2022

Worship Services

9:00 am Livestream | 10:30 am Outdoor

GATHERING

WELCOME

THANKSGIVING FOR BAPTISM

L: Holy God, holy and merciful, holy and mighty, you are the river of life, you are the everlasting wellspring, you are the fire of rebirth.

C: We give thanks to you for oceans and lakes, for rivers and streams. We shout praises to you for clouds and rain, for dew and snow.

L: Your waters are below us, around us, above us: our life is born in you.

C: You are the fountain of resurrection.

L: We remember and proclaim the many stories of your saving waters. Noah and the animals survive the flood. Hagar discovers your well. The Israelites escape through the sea, and they drink from your gushing rock. Naaman washes his leprosy away, and the Samaritan woman will never be thirsty again.

C: We thank you for your Word that saves us in this water. Breathe your Spirit into all who are gathered here, and into all creation. Illumine our days. Enliven our bones. Dry our tears.

L: Wash away the sin within us, and drown the evil around us. Satisfy all our thirst with your living water, Jesus Christ, our Savior, who lives and reigns with you and the Holy Spirit, one God, now and forever.

C: Amen.

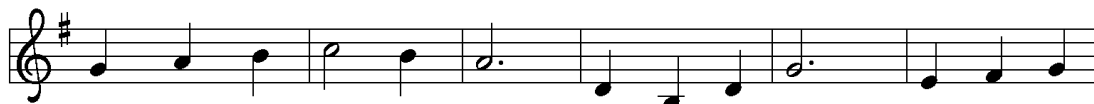
HYMN OF PRAISE

Drawn to the Light – ELW 593

One verse per week



1 Peo - ple who walk in dark - ness have sought a light in the
2 How can we tell a heav - en from hell if ev - 'ry - one
3 Where is the sun? Oh, there will be none! The Lamb is the



heart of the dark - est night. Just when we thought all would be
dwells in the dark of night? Morn - ing dis - pels, gent - ly com -
one who is shin - ing bright, bids us to come! Life has be -



lost, we were drawn to the light of God.
pels, and we're drawn to the light of God.
gun when we're drawn to the light of God.

Refrain



Dawn is in sight! Gone is the night, drawn to the



light and the morn - ing. Glo - rious and bright, oh, what a



sight to be drawn to the light of God.

PRAYER OF THE DAY

L: Let us pray ...

C: Amen.

CHILDREN'S TIME

WORD

SCRIPTURE READING

Jeremiah 17:5-10

Thus says the Lord: Cursed are those who trust in mere mortals and make mere flesh their strength, whose hearts turn away from the Lord. They shall be like a shrub in the desert, and shall not see when relief comes. They shall live in the parched places of the wilderness, in an uninhabited salt land. Blessed are those who trust in the Lord, whose trust is the Lord. They shall be like a tree planted by water, sending out its roots by the stream. It shall not fear when heat comes, and its leaves shall stay green; in the year of drought it is not anxious, and it does not cease to bear fruit. The heart is devious above all else; it is perverse — who can understand it? I the Lord test the mind and search the heart, to give to all according to their ways, according to the fruit of their doings.

R: The Word of the Lord.

C: **Thanks be to God.**

GOSPEL ACCLAMATION

You Have Put on Christ – ELW 211

The image shows two staves of musical notation in G major (one flat) and 4/4 time. The first staff contains the melody for the first line of the acclamation, with three measures numbered 1*, 2, and 3. The second staff contains the melody for the second line. The lyrics are written below the notes.

1* 2 3
You have put on Christ; in him you have been bap - tized.
Al - le - lu - ia, al - le - lu - ia.

He came down with them and stood on a level place, with a great crowd of his disciples and a great multitude of people from all Judea, Jerusalem, and the coast of Tyre and Sidon. They had come to hear him and to be healed of their diseases; and those who were troubled with unclean spirits were cured. And all in the crowd were trying to touch him, for power came out from him and healed all of them.

Then he looked up at his disciples and said: "Blessed are you who are poor, for yours is the kingdom of God. "Blessed are you who are hungry now, for you will be filled. "Blessed are you who weep now, for you will laugh. "Blessed are you when people hate you, and when they exclude you, revile you, and defame you on account of the Son of Man. Rejoice in that day and leap for joy, for surely your reward is great in heaven; for that is what their ancestors did to the prophets. "But woe to you who are rich, for you have received your consolation. "Woe to you who are full now, for you will be hungry. "Woe to you who are laughing now, for you will mourn and weep. "Woe to you when all speak well of you, for that is what their ancestors did to the false prophets.

R: The Gospel of the Lord

C: **Praise to you, O Christ**

SERMON

Pastor Sam Nelson

HYMN OF THE DAY

Blest Are They – ELW 728 vs. 1 – 3

Leader or All

1 Blest are they, the poor in spir - it; theirs is the
 2 Blest are they, the low - ly ones; . . . they shall in -
 3 Blest are they who show mer - cy; mer - cy
 4 Blest are they who seek peace; . . they are the
 5 Blest are you who suf - fer hate, . . . all . . . be -

king - dom of God. Blest are they,
 her - it the earth. Blest are they, who
 shall . . . be theirs. Blest are they, the
 chil - dren of God. Blest are they, who
 cause . . . of me. Re - joice, be glad,

full of sor - row; they shall be con - soled.
 hun - ger and thirst; they shall have their fill.
 pure of heart; they shall see God.
 suf - fer in faith; the glo - ry of God is theirs.
 yours is the king - dom; shine for all to see.

Refrain
 All

Re - joice and be glad!

Bless - ed are you, ho - ly are you!

Re - joice and be glad!

Yours is the king - dom of God!

PRAYERS OF THE PEOPLE

L: Lord in your mercy,

C: Hear our prayer.

THE SHARING OF THE PEACE

L: The peace of the Lord be with you always, C: And also with you!

OFFERING OF OUR GIFTS AND OURSELVES

OFFERTORY RESPONSE

As The Grains of Wheat – ELW 465

Refrain

As the grains of wheat once scat - tered on the hill were
gath - ered in - to one to be - come our bread; so may all your peo - ple from
all the ends of earth be gath - ered in - to one in you.
1 As this cup of bless - ing is shared with - in our midst,
2 Let this be a fore - taste of all that is to come when
may we share the pres - ence of your love.
all cre - a - tion shares this feast with you.

Refrain

MEAL

GREAT THANKSGIVING & WORDS OF INSTITUTION

L: The Lord be with you,

C: And also with you.

L: Lift up your hearts,

C: We lift them to the Lord.

L: Let us give thanks to the Lord our God.

C: It is right to give our thanks and praise.

Our Father, who art in heaven, hallowed be thy name,
 thy kingdom come, thy will be done, on earth as it is in heaven.
 Give us this day our daily bread; and forgive us our trespasses,
 as we forgive those who trespass against us;
 and lead us not into temptation, but deliver us from evil.
 For thine is the kingdom, and the power, and the glory,
 forever and ever. Amen.

MUSIC DURING COMMUNION

Lamb of God – ELW 195

Lamb of God, you take a - way the sin of the world; have mer-cy on
 us. Lamb of God, you take a - way the sin of the
 world; have mer-cy on us. Lamb of God, you take a - way the
 sin of the world; grant us peace, grant us peace.

SENDING

ANNOUNCEMENTS

BLESSING

SENDING HYMN

May the God of Hope Go with Us – ACS 984



¡Dios de la es - pe - ran - za, da - nos go - zo y paz!
 May the God of hope go with us ev - 'ry day,



Al mun - do en cri - sis, ha - bla tu ver - dad.
 to a world in need with news of joy and peace.



Dios de la jus - ti - cia, mán - da - nos tu luz,
 May the God of jus - tice speed us on our way,



luz y es - pe - ran - za en la os - cu - ri - dad.
 bring - ing light and hope to ev - 'ry land and race.



O - re - mos por la paz, can - te - mos
 Pray - ing, let us work for peace; sing - ing, share our



de tu a - mor. Lu - che - mos por la paz,
 joy with all; work - ing for a world that's new,



fie - les a ti, Se - ñor.
 faith - ful when we hear Christ's call.

DISMISSAL

L: Go with Christ into a weary world, and share the Good News.

C: Thanks be to God!



Bethlehem Lutheran Church
& Early Childhood Center

Electronic Giving Options Update

- Our Give Plus+ App has been replaced by **Vanco Mobile App!** **Vanco Mobile App** will be your new mobile means of financially supporting Bethlehem. To begin using it:
 - Download the “**Vanco Mobile**” app from your App Store using your smartphone or tablet
 - Search for Bethlehem Lutheran Church **Encinitas** by name
 - If you already have an account, your Username and Password remain the same. And your prior online account information and recurring gifts will automatically carry over
 - If you don’t have an account, follow the app’s “Sign Up” prompts
- BLC Website
 - Go to BLCENC.org and select the “Contribute” tab from the top menu as before
 - Click the “Give Now” button to go to our new and improved Vanco Online page.

- With either option you can:
 - Use a checking account, or credit & debit cards
 - Choose to cover the credit card transaction fee
 - Make recurring, or one-time donations
 - Give to the general or various special funds
 - All donations appear on your giving statements

Thank You for Supporting Bethlehem!

All Are Welcome!

We live in a diverse world. We are hurting, broken and heavy hearted. We are loving, celebrating, and above all — we are welcoming. Regardless of the color of your skin or the color of your hair, regardless of your gender identity, sexual orientation, relationship status, or political affiliation — you are welcome here.

If you are a believer, a doubter or a seeker after Christ — you have a place here.

If you own, rent, or have nothing at all — you are welcome here.

If you are fully abled, disabled, or a person of differing abilities, if you have regrets, fears, addictions, or afflictions — you have a place here.

All who are wise and all who are confused, all who have found love and all who have lost it, all who celebrate this welcome statement and all who fear it — are welcome here.

For these are all of the things that make you who you are: the person God loves. Come as you are and be celebrated for who you are. The time is now. Your place is here. Bethlehem Lutheran Church is an all-inclusive church.



Reconciling in Christ



**Evangelical Lutheran
Church in America**

God's work. Our hands.

Offering gifts can be made electronically, either on our website at www.blcenc.org by clicking on the contribute tab, or by using the **Vanco Mobile App**. There are options for one-time donations, as well as recurring gifts and special offerings.

ACKNOWLEDGEMENTS

"Drawn to the Light" - Text and Tune LA CROSSE: John C. Yivisaker, b. 1937, © 1990 John C. Yivisaker. **"You Have Put On Christ"** - Text: International Commission on English in the Liturgy, © 1969; Tune: Howard Hughes, b. 1930; Tune: © 1977, ICEL. **"As the Grains of Wheat"** - Text: Didache, 2nd cent., Marty Haugen, b. 1950; and Tune: Marty Haugen, © 1990 GIA Publications, Inc. **"Lamb of God"** - Tune: Jeremy Young, b. 1948, Tune: © 1995 Augsburg Fortress. **"Blest Are They"** - Text and Tune: David Haas, b. 1957, © 1985 GIA Publications, Inc. **"We Come to the Hungry Feast"** - Text and Tune: Ray Makeever, b. 1943, © 1982 Augsburg Fortress Publishers. **"May the God of Hope Go with Us"** - Text: Alvin Schutmaat, 1921-1988; Tune ARGENTINA: Argentine folk melody; Both Public Domain. For copyrighted selections, all rights reserved. Reprinted under OneLicense.net License No. A-706214. Permission to podcast/stream the music in this service obtained from One License with license #A-706214 For copyrighted selections, all rights reserved. Reprinted under OneLicense.net License No. A-706214. Permission to podcast/stream the music in this service obtained from One License with license #A-706214.
Photo Credit: <https://whomshallisend.blogspot.com/2012/03/jeremiah-175-10-psalm-11-46-luke-1619.html>

925 Balour Drive, Encinitas, CA 92024

760•753•1026 | info@blcenc.org | www.blcenc.org