



# Bethlehem Lutheran Church & Early Childhood Center



Fourth Sunday of Advent

December 18, 2022

Worship Services

9:00 am | 10:30 am

# Welcome to Bethlehem!

We hope you feel a warm welcome at Bethlehem. Please visit our website at [www.blcenc.org](http://www.blcenc.org) for more information about the congregation. If you're visiting with us, please fill out an information card and place it in the offering basket so we can stay connected.

## CHILDREN

All children are welcome in worship at Bethlehem Lutheran Church (BLC). There is a comfort room at the back of the sanctuary. Busy bags are available in the narthex. During our 10:30 AM service, after Children's Time, children ages 3 years – 6<sup>th</sup> grade may either attend our Learning Circle program or remain with you. Nursery care is available for young children during the 10:30 AM service. Ask the host for more information.

## COMMUNION

We practice **open communion** meaning all are welcome to participate. We commune by intinction. The pastor will dip the bread (or gluten-free wafer) into a divided chalice that has white wine or red grape juice. We are happy to bring communion to individuals with limited mobility.

## ACCESSIBILITY

Hearing assistance devices are located at the back of the sanctuary, and reading glasses are available in the narthex.

## PARTICIPATION

The different movements that happen during worship (sitting, standing, making the sign of the cross) are all optional; please engage as you are comfortable or able.

---

## ACKNOWLEDGEMENTS

"**Warm the Time of Winter**" - Text: Ruth Duck, b. 1947, ©1992 GIA Publications, Inc.; Tune: Lori True, ©2000 GIA Publications, Inc. "**Awake! Awake, and Greet the New Morn**" - Text and Tune: Marty Haugen, b. 1950, ©1983 GIA Publications, Inc. "**Creator of the Stars of Night**" - Text: Latin hymn, 9th cent., tr. *Hymnal* 1940, ©985 Church Publishing, Inc.; Tune CONDITOR ALME SIDERUM: Plainsong mode V, Public Domain. "**He Came Down**" - Text: Cameroon traditional; Tune: Cameroon traditional, arr. John L. Bell, b. 1949, ©1990 WGRG (North America). "**The King Shall Come**" - Text: John Brownlie, 1859-1925, Public Domain; Tune CONSOLATION: A. Davison, *Kentucky Harmony*, arr. © 1969 Concordia Publishing House. "**Come, Thou Long-Expected Jesus**" - Text: Charles Wesley, 1707-1788, Public Domain; Tune HOLY MANNA: W. Moore, *Columbian Harmony*, 1825, arr. © 2008 Augsburg Fortress. "**My Soul Proclaims Your Greatness**" - Text: *With One Voice*, 1995, based on the Magnificat, © 1995 Augsburg Fortress Publishers; Tune KINGSFOLD: English folk tune, arr. Ralph Vaughan Williams, 1872-1958, © 1906 Oxford University Press. For previous copyrighted selections, all rights reserved. Reprinted under OneLicense.net License No. A-706214. Permission to podcast/stream the music in this service obtained from One License with license #A-706214. Photo Credits: <https://www.nlcf.org/videos/god-with-us/>, <https://www.funbirmingham.org/advent-and-christmas-web-fb/>

# GATHERING

## WELCOME

## GATHERING HYMN

Warm the Time of Winter – Verse 1



1. When the wind of win - ter blows, bring - ing times of  
2. When we shiv - er in des - pair, when the chill of  
3. When in days of fall - en snow, change con - founds or



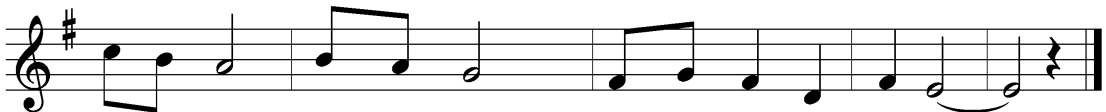
sol - i - tude, fill the si - lent, ic - y night;  
death comes near, hold us, Spir - it, calm our fear,  
love burns low, from the ash - es may there rise



be our hearts' com - pas - sion.  
while the eve - ning deep - ens.  
phoe - nix of our grow - ing.



Ho - ly light, warm our night; warm the time of win - ter.



Ho - ly light, warm our night; warm the time of win - ter.

L: Gracious God, as we prepare to celebrate the mystery of Christ's love, help us to make ready the way of Jesus, your Word in human form.

## HYMN OF PRAISE

Kyrie

Cantor sings verses & congregation sings refrain

Verse: You came as a child of Bethlehem to gather us into the peace of your kingdom.

**Refrain**

Ky - ri - e, Ky - ri - e, Ky - ri - e e -  
le - i - son. Ky - ri - e, Ky - ri - e,  
Ky - ri - e e - le - i - son.

L: Holy God, grant us your peace, guide us on the way, and lead us into closer relationship with you.

C: Amen.

## ADVENT WREATH LIGHTING

L: This morning we light four candles. The first candle is the light of hope for those in times of waiting. The second candle is the light of hope for those who are wearied by the circumstances of life. The third candle is the light of hope for those eagerly watching for God's promised glory. The fourth candle is the light of hope for those who carry the wounds of life. Today we acknowledge our pain, and the pain we have caused others. As the light shines, we turn to the Savior who came to rescue the lost, to help the hurting, and to bind up the broken.

# HYMN

Awake! Awake, and Greet the New Morn – ELW 242

4 Re - jice, re - jice, take heart in the night, though  
dark the win - ter and cheer - less, the ris - ing sun shall  
crown you with light, be strong and lov - ing and fear - less.  
Love be our song and love our prayer and love our end - less  
sto - ry; may God fill ev - 'ry day we share and  
bring us at last in - to glo - ry.

## PRAYER OF THE DAY

L: Let us pray ...

C: Amen.

## CHILDREN'S TIME

# WORD

## SCRIPTURE READING

Isaiah 7:10-16

R: The Word of the Lord.

C: Thanks be to God.

GOSPEL ACCLAMATION

O Come, O Come, Emmanuel – ELW 257

Verse 4



1 O come, O come, Em - man - u - el, and ran - som cap - tive  
 2 O come, O Wis - dom from on high, em - brac - ing all things  
 3 O come, O come, O Lord of might, as to your tribes on  
 4 O come, O Branch of Jes - se, free your own from Sa - tan's



Is - ra - el, that mourns in lone - ly ex - ile here  
 far and nigh: in strength and beau - ty come and stay;  
 Si - nai's height in an - cient times you gave the law  
 tyr - an - ny; from depths of hell your peo - ple save,



un - til the Son of God ap - pear.  
 teach us your will and guide our way. Re-joyce! Re-joyce!  
 in cloud, and maj - es - ty, and awe.  
 and give them vic - t'ry o'er the grave.



Em - man - u - el shall come to you, O Is - ra - el.

GOSPEL READING

Matthew 1:18-25

R: The Gospel of the Lord.

C: Praise to you, O Christ.

SERMON

Pastor Sam Nelson

## HYMN OF THE DAY

Go Tell It on the Mountain – ELW 290

*Refrain*



Go tell it on the moun - tain, o-ver the hills and ev - 'ry - where;



go tell it on the moun - tain that Je - sus Christ is born!



- 1 While shep-herds kept their watch-ing o'er si - lent flocks by night,
- 2 The shep-herds feared and trem-bled when, lo, a - bove the earth
- 3 Down in a lone - ly man - ger the hum-ble Christ was born;

*Refrain*



be - hold, through-out the heav-ens there shone a ho - ly light.  
rang out the an - gel cho - rus that hailed our Sav - ior's birth.  
and God sent us sal - va - tion that bless-ed Christ-mas morn.

## PRAYERS OF THE PEOPLE

L: Lord in your mercy,

C: Hear our prayer.

## THE SHARING OF THE PEACE

L: The peace of the Lord be with you always. C: And also with you!

## OFFERING AND THANKSGIVING

## OFFERTORY RESPONSE

He Came Down – ELW 253

2 verses/week



- 1 He came down that we may have love; he came down that we may have love;
- 2 He came down that we may have light; he came down that we may have light;
- 3 He came down that we may have peace; he came down that we may have peace;
- 4 He came down that we may have joy; he came down that we may have joy;



he came down that we may have love;  
he came down that we may have light; hal - le - lu - jah for - ev - er - more.  
he came down that we may have peace;  
he came down that we may have joy;

## MEAL

### GREAT THANKSGIVING & WORDS OF INSTITUTION

- L: The Lord be with you,                      C: And also with you.
- L: Lift up your hearts,                        C: We lift them to the Lord.
- L: Let us give thanks to the Lord our God.
- C: It is right to give our thanks and praise.

### THE LORD'S PRAYER

ELW pg. 112

**Our Father, who art in heaven, hallowed be thy name,  
thy kingdom come, thy will be done, on earth as it is in heaven.  
Give us this day our daily bread; and forgive us our trespasses,  
as we forgive those who trespass against us;  
and lead us not into temptation, but deliver us from evil.  
For thine is the kingdom, and the power, and the glory,  
forever and ever. Amen.**



MUSIC DURING COMMUNION

Creator of the Stars of Night – ELW 245

4 Come in your ho - ly might, we pray, re - deem us for e -  
 ter - nal day; de - fend us while we dwell be - low  
 from all as - saults of our dread foe.

COMMUNION HYMN

Your Little Ones, Dear Lord – ELW 286

1 Your lit - tle ones, dear Lord, are we, and  
 2 With songs we has - ten you to greet, and  
 3 Oh, draw us whol - ly to you, Lord, and  
 4 Un - til at last we too pro - claim, with  
 come your low - ly bed to see; en - light - en ev - 'ry  
 kiss the ground be - fore your feet. Oh, bless - ed hour, oh,  
 to us all your grace ac - cord; true faith and love to  
 all your saints, your glo - rious name; in par - a - dise our  
 soul and mind, that we the way to you may find.  
 sweet - est night that gave you birth, our soul's de - light.  
 us im - part, that we may hold you in our heart.  
 songs re - new, and praise you as the an - gels do.

# SENDING

## ANNOUNCEMENTS



Sun, Dec. 18 <sup>th</sup>	Christmas Caroling	1 PM
Sat, Dec. 24 <sup>th</sup>	Candlelit Christmas Eve Services	10 AM, 7 & 9 PM
	Children's Christmas Eve Service	4:30 PM
Sun, Dec. 25 <sup>th</sup>	One Sunday Morning Worship	10 AM
Sun, Jan. 1 <sup>st</sup>	One Sunday Morning Worship	10 AM

## BLESSING

## SENDING HYMN

O, Come, All Ye Faithful – ELW 283



1 O come, all ye faith - ful, joy - ful and tri - um - phant! O  
 2 The high - est, most ho - ly, light of light e - ter - nal,  
 3 Sing, choirs of an - gels, sing in ex - ul - ta - tion,  
 4 Yea, Lord, we greet thee, born this hap - py morn - ing;



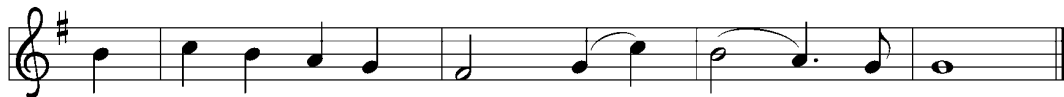
come ye, O come ye to Beth - le - hem;  
 born of a vir - gin, a mor - tal he comes;  
 sing, all ye cit - i - zens of heav - en a - bove!  
 Je - sus, to thee be . . . glo - ry giv'n!



come and be - hold him, born the king of an - gels:  
 Son of the Fa - ther now in flesh ap - pear - ing!  
 Glo - ry to God . . . in . . . the . . . high - est:  
 Word of the Fa - ther, now in flesh ap - pear - ing:

*Refrain*

Ve - ni - te a - do - re - mus, ve - ni - te a - do - re - mus,  
 O come, let us a - dore him, O come, let us a - dore him,



ve - ni - te a - do - re - mus Do - mi - num.  
 O come, let us a - dore him, Christ the Lord!

## DISMISSAL

L: Go in peace, prepare the way!

C: Thanks be to God!

# All Are Welcome!

We live in a diverse world. We are hurting, broken and heavy hearted. We are loving, celebrating, and above all — we are welcoming. Regardless of the color of your skin or the color of your hair, regardless of your gender identity, sexual orientation, relationship status, or political affiliation — you are welcome here.

If you are a believer, a doubter or a seeker after Christ — you have a place here.

If you own, rent, or have nothing at all — you are welcome here.

If you are fully abled, disabled, or a person of differing abilities, if you have regrets, fears, addictions, or afflictions — you have a place here.

All who are wise and all who are confused, all who have found love and all who have lost it, all who celebrate this welcome statement and all who fear it — are welcome here.

For these are all of the things that make you who you are: the person God loves. Come as you are and be celebrated for who you are. The time is now. Your place is here.

Bethlehem Lutheran Church is an all-inclusive church.



Reconciling in Christ



**Evangelical Lutheran  
Church in America**

God's work. Our hands.

## Electronic Giving at Bethlehem

Offering gifts can be made electronically on our website [www.blcenc.org](http://www.blcenc.org) by clicking on the contribute tab, or by scanning this QR code. There are options for one-time donations, as well as recurring gifts and special offerings. **No account is needed to donate on our website.**



You can also use the **Vanco Mobile App**. Simply download it from your app store, and search “Bethlehem Lutheran Church Encinitas” by name (there is no invite code). If you already have an account from our website, the same login information will work. If not, please sign up with a new account.

**Thank You for Supporting Bethlehem!**