



Bethlehem Lutheran Church & Early Childhood Center



Fourth Sunday of Easter

April 30, 2023

Worship Services

9:00 am | 10:30 am

Welcome to Bethlehem!

We hope you feel a warm welcome at Bethlehem. Please visit our website at www.blcenc.org for more information about the congregation. If you're visiting with us, please fill out an information card and place it in the offering basket so we can stay connected.

CHILDREN

All children are welcome in worship at Bethlehem Lutheran Church (BLC). There is a comfort room at the back of the sanctuary. Busy bags are available in the narthex. During our 10:30 AM service, after Children's Time, children ages 3 years – 6th grade may either attend our Learning Circle program or remain with you. Nursery care is available for young children during the 10:30 AM service. Ask the host for more information.

COMMUNION

We practice **open communion** meaning all are welcome to participate. We commune by intinction. The pastor will dip the bread (or gluten-free wafer) into a divided chalice that has white wine or red grape juice. We are happy to bring communion to individuals with limited mobility.

ACCESSIBILITY

Hearing assistance devices are located at the back of the sanctuary.

PARTICIPATION

The different movements that happen during worship (sitting, standing, making the sign of the cross) are all optional; please engage as you are comfortable or able.

ACKNOWLEDGEMENTS

From **Holy Communion, Setting 8: "Kyrie"** - Text and Tune: Larry Olson, ©1989 Dakota Road Music; **"Alleluia Lord"** - Text and Tune: Robin Cain, ©1989 Dakota Road Music; **"Lamb of God"** - Tune: Jay Beech, © 1995, Augsburg Fortress. **"Take My Life, That I May Be"** - Text: Frances R. Havergal, 1836-1879, Public Domain; Tune TOMA MI VOLUNTAD: William Dexheimer Pharris, b. 1956, arr. Mark Sedio, b. 1954, © 1995, Augsburg Fortress. **"Listen, God Is Calling"** - Text: Tanzanian traditional, tr. Howard S. Olson, b. 1022; Tune NENO LAKE MUNGU: Tranznian traditional, arr. Austin C. Lovelace, b. 1919; Both © 1993 Augsburg Fortress Publishers. **"Lord of All Hopefulness"** - Text: Jan Struther, 1901-1953, used by permission of Oxford University Press; Tune SLANE: Irish traditional, Public Domain. For previous copyrighted selections, all rights reserved. Reprinted under OneLicense.net LicenseNo.A-706214. Other hymn selections are in the Public Domain. Permission to podcast/stream the music in this service obtained from One License with license #A-706214.

Photo Credit: <https://www.pinterest.com/pin/147915168987784683/>

GATHERING

WELCOME

THANKSGIVING FOR BAPTISM

L: Joined to Christ in the waters of baptism, we are welcomed, restored, and supported as citizens of the new creation. Let us give thanks for the gift of baptism.

C: In mercy and might you have freed us from death, and raised us with Jesus. In baptismal waters our old life is washed away, and in them we are born anew.

L: We give thanks to you, O God, for waters that wash us clean, quench our thirst, and nurture both crops and creatures. You are the river of life; you are the everlasting wellspring.

C: Wash away our sin and all that separates us from you. Empower our witness to your resurrection. Strengthen our resolve in seeking justice for all.

L: Satisfy the world's need through this living water. Where drought dries the earth, bring refreshment. Where despair prevails, grant hope. Where chaos reigns, bring peace. We ask this through Christ, who reigns with you and the Spirit forever.

C: Amen.

GATHERING HYMN

Lord of All Hopefulness – ELW 765 vs. 1, 3, & 4



1 Lord of all hope - ful - ness, Lord of all joy,
2 Lord of all ea - ger - ness, Lord of all faith,
3 Lord of all kind - li - ness, Lord of all grace,
4 Lord of all gen - tle - ness, Lord of all calm,



whose trust, ev - er child - like, no cares could de - stroy:
whose strong hands were skilled at the plane and the lathe:
your hands swift to wel - come, your arms to em - brace:
whose voice is con - tent - ment, whose pres - ence is balm:



be there at our wak - ing, and give us, we pray,
be there at our la - bors, and give us, we pray,
be there at our hom - ing, and give us, we pray,
be there at our sleep - ing, and give us, we pray,



your bliss in our hearts, Lord, at the break of the day.
your strength in our hearts, Lord, at the noon of the day.
your love in our hearts, Lord, at the eve of the day.
your peace in our hearts, Lord, at the end of the day.

GREETING

L: The grace of our Lord Jesus Christ, the love of God, and the communion of the Holy Spirit, be with you all.

C: **And also with you.**



Refrain

Ky-ri - e e - lei - son, on our world and on our way.



Ky-ri - e e - lei - son, ev-'ry day.



3 For peace in our hearts, . . . for peace in our homes, . . . for

4 For your Spir - it to guide; that you cen - ter our lives in the



friends and fam - i - ly; for

wa - ter and the word; that you



life and for love, for our work and our play,

nour-ish our souls . . . with your bod - y and blood,



Refrain

let us pray to the Lord, let us pray to the Lord.

PRAYER OF THE DAY

L: Let us pray ...

C: Amen.

CHILDREN'S TIME (10:30 AM)

WORD

SCRIPTURE READING

Psalm 23

R: The Word of the Lord.

C: **Thanks be to God.**

GOSPEL ACCLAMATION

ELW pg. 188

Al-le - lu - ia. Lord, to whom shall we go? You have the
words of e - ter - nal life. Al-le - lu - ia.
Al-le - lu - ia, al - le - lu - ia. Al-le - lu - ia.
Al-le - lu - ia, al - le - lu - ia.

GOSPEL READING

John 10:1-16

R: The Gospel of the Lord.

C: **Praise to you, O Christ.**

SERMON

Pastor Sam Nelson

HYMN OF THE DAY

Savior Like a Shepherd Lead Us – ELW 789 vs. 1, 2, 4



1 Sav-ior like a shep-herd lead us; much we need your ten - der care.
2 We are yours; in love be - friend us, be the guard-ian of our way;
3 You have prom-ised to re - ceive us, poor and sin - ful though we be;
4 Ear - ly let us seek your fa - vor, ear - ly let us do your will;



In your pleas-ant pas-tures feed us, for our use your fold pre-prepare.
keep your flock, from sin de - fend us, seek us when we go a - stray.
you have mer - cy to re - lieve us, grace to cleanse, and pow'r to free.
bless - ed Lord and on - ly Sav - ior, with your love our spir - its fill.



Bless-ed Je - sus, bless-ed Je - sus, you have bought us; we are yours.
Bless-ed Je - sus, bless-ed Je - sus, hear us chil - dren when we pray.
Bless-ed Je - sus, bless-ed Je - sus, ear - ly let us turn to you.
Bless-ed Je - sus, bless-ed Je - sus, you have loved us, love us still.



Bless-ed Je - sus, bless-ed Je - sus, you have bought us; we are yours.
Bless-ed Je - sus, bless-ed Je - sus, hear us chil - dren when we pray.
Bless-ed Je - sus, bless-ed Je - sus, ear - ly let us turn to you.
Bless-ed Je - sus, bless-ed Je - sus, you have loved us, love us still.

APOSTLES' CREED

ELW pg. 105

PRAYERS OF THE PEOPLE

L: Lord in your mercy,

C: Hear our prayer.

THE SHARING OF THE PEACE

L: The peace of the Lord be with you always, C: And also with you!

OFFERING OF OUR GIFTS AND OURSELVES

OFFERTORY RESPONSE

Take My Life, That I May Be – ELW 583

Refrain/Estrillo

Take my life, that I may be con - se - crat - ed, Lord,
to thee; take my mo - ments and my days;
let them flow in cease - less praise. less praise.
3 Take my voice and let me sing
al - ways, on - ly for my King;
take my lips and let them be filled with
Refrain/Estrillo
mes - sag - es from thee.

To stanzas *Last time*

MEAL

GREAT THANKSGIVING

L: The Lord be with you,

C: **And also with you.**

L: Lift up your hearts,

C: **We lift them to the Lord.**

L: Let us give thanks to the Lord our God.

C: **It is right to give our thanks and praise.**

WORDS OF INSTITUTION

THE LORD'S PRAYER

ELW pg. 112

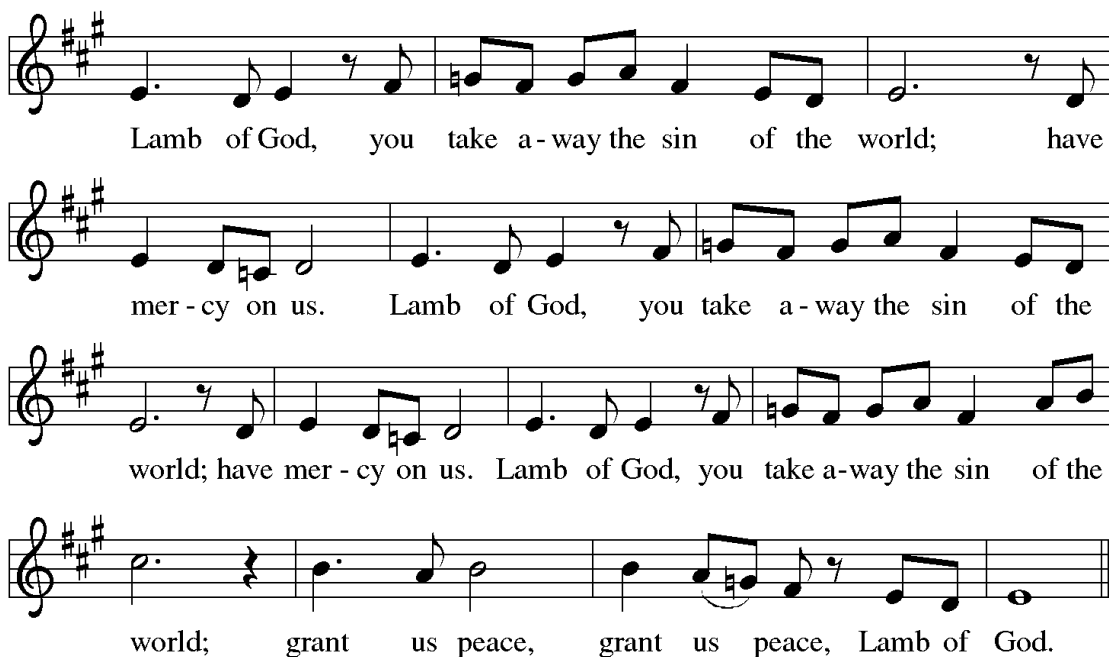
Our Father, who art in heaven, hallowed be thy name,
thy kingdom come, thy will be done,
on earth as it is in heaven.

Give us this day our daily bread; and forgive us our trespasses,
as we forgive those who trespass against us;
and lead us not into temptation, but deliver us from evil.

For thine is the kingdom, and the power, and the glory,
forever and ever. Amen.

MUSIC DURING COMMUNION

Lamb of God – ELW pg. 191



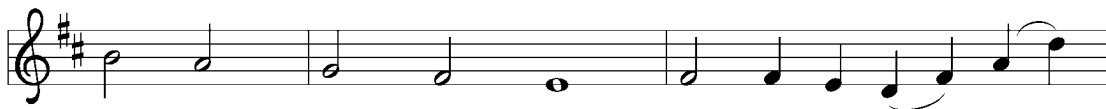
Lamb of God, you take a-way the sin of the world; have
mer-cy on us. Lamb of God, you take a-way the sin of the
world; have mer-cy on us. Lamb of God, you take a-way the sin of the
world; grant us peace, grant us peace, Lamb of God.

COMMUNION HYMN

I Know That My Redeemer Lives – ELW 619



1 I know that my Re - deem - er lives! What com - fort
 2 He lives tri - um - phant from the grave; he lives e -
 3 He lives to grant me rich sup - ply; he lives to
 4 He lives to si - lence all my fears; he lives to



this sweet sen - tence gives! He lives, he lives, who
 ter - nal - ly to save; he lives ex - alt - ed,
 guide me with his eye; he lives to com - fort
 wipe a - way my tears; he lives to calm my



once was dead; he lives, my ev - er - liv - ing head!
 throned a - bove; he lives to rule his church in love.
 me when faint; he lives to hear my soul's com - plaint.
 trou - bled heart; he lives all bless - ings to im - part.

- | | |
|--|--|
| <p>5 He lives to bless me with his love; he lives to plead for me above; he lives my hungry soul to feed; he lives to help in time of need.</p> | <p>7 He lives and grants me daily breath; he lives, and I shall conquer death; he lives my mansion to prepare; he lives to bring me safely there.</p> |
| <p>6 He lives, my kind, wise, heav'nly friend; he lives and loves me to the end; he lives, and while he lives, I'll sing; he lives, my prophet, priest, and king!</p> | <p>8 He lives, all glory to his name! He lives, my Savior, still the same; what joy this blest assurance gives: I know that my Redeemer lives!</p> |

SENDING

ANNOUNCEMENTS

BLESSING

SENDING HYMN

Listen, God is Calling – ELW 513

Refrain
Leader All

Ne - no, ne - no la - ke Mu - ngu la - ku - i - ta we - we,
Lis - ten, lis - ten, God is call - ing, through the Word in - vit - ing,

ne - no la wo - ko - vu, te - na je - ma. ma.
of - fer - ing for - give - ness, com - fort, and joy. joy.

Leader All

Ye - su a - li - se - ma, Mka - hu - bi - ri.
1 Je - sus gave his man - date: share the good news
2 Let none be for - got - ten through - out the world.
3 Help us to be faith - ful, stand - ing stead - fast,

Leader All *Refrain*

Ne - no la - ke Mu - ngu la wo - ko - vu.
that he came to save us and set us free.
In the tri - une name of God go and bap - tize.
walk - ing in your pre - cepts, led by your Word.

DISMISSAL

L: Go in peace. Follow the risen Christ!

C: Thanks be to God!

All Are Welcome!

We live in a diverse world. We are hurting, broken and heavy hearted. We are loving, celebrating, and above all — we are welcoming. Regardless of the color of your skin or the color of your hair, regardless of your gender identity, sexual orientation, relationship status, or political affiliation — you are welcome here.

If you are a believer, a doubter or a seeker after Christ — you have a place here.

If you own, rent, or have nothing at all — you are welcome here.

If you are fully abled, disabled, or a person of differing abilities, if you have regrets, fears, addictions, or afflictions — you have a place here.

All who are wise and all who are confused, all who have found love and all who have lost it, all who celebrate this welcome statement and all who fear it — are welcome here.

For these are all of the things that make you who you are: the person God loves. Come as you are and be celebrated for who you are. The time is now. Your place is here. Bethlehem Lutheran Church is an all-inclusive church.



Reconciling in Christ



**Evangelical Lutheran
Church in America**

God's work. Our hands.

Electronic Giving at Bethlehem

Offering gifts can be made electronically on our website www.blcenc.org by clicking on the contribute tab, or by scanning this QR code. There are options for one-time donations, as well as recurring gifts and special offerings. **No account is needed to donate on our website.**



You can also use the **Vanco Mobile App**. Simply download it from your app store, and search "Bethlehem Lutheran Church Encinitas" by name (there is no invite code). If you already have an account from our website, the same login information will work. If not, please sign up with a new account.

Thank You for Supporting Bethlehem!