



# Bethlehem Lutheran Church & Early Childhood Center



Season After Pentecost

Sunday July 26<sup>th</sup>, 2020

# GATHERING

## PRELUDE

## WELCOME

## OPENING LITANY

L: God in the Spirit revealed in Jesus Christ, calls us by grace.

**C: To be renewed in the image of our Creator, that we may be one in divine love for the world.**

L: Today is the day God cares for the integrity of creation, wills the healing and wholeness of all life, weeps at the abuse of earth's goodness.

**C: And so shall we.**

L: Today is the day God embraces all hues of humanity, delights in diversity and difference, favors solidarity transforming strangers into friends

**C: And so shall we.**

L: Today is the day God calls for nations and peoples to live in peace, celebrates where justice and mercy embrace, exults when the wolf grazes with the lamb.

**C: And so shall we. Today is the day God brings good news to the poor, proclaims release to the captives, gives sight to the blind, and sets the oppressed free. And so shall we. Amen.**



☐ Glo - ry to God, glo - ry to God, glo - ry to God in the high - est;



glo - ry to God, glo - ry to God, and peace to God's peo - ple on earth.



☐ Lord God, heav - en - ly king, al - migh - ty God and Fa - ther, we



wor - ship you, we give you thanks, we praise you for your glo - ry.



☐ Glo - ry to God, glo - ry to God, glo - ry to God in the high - est;



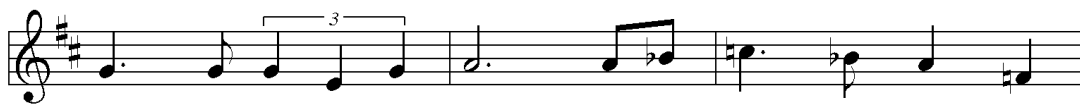
glo - ry to God, glo - ry to God, and peace to God's peo - ple on earth.




☐ Lord Je - sus Christ, on - ly Son of the Fa - ther,



Lord God, Lamb of God, you take a - way the sin of the



world: have mer - cy on us; you are seat - ed at the




right hand of the Fa - ther: re- ceive our prayer.



☒ Glo- ry to God, glo - ry to God, glo - ry to God in the high - est;



glo - ry to God, glo - ry to God, and peace to God's peo- ple on earth,



and peace to God's peo - ple on earth.

## PRAYER OF THE DAY

L: Let us pray ...

C: Amen.

## CHILDREN'S TIME

# WORD

## SCRIPTURE READING

Romans 8:26-39

Likewise the Spirit helps us in our weakness; for we do not know how to pray as we ought, but that very Spirit intercedes with sighs too deep for words. And God, who searches the heart, knows what is the mind of the Spirit, because the Spirit intercedes for the saints according to the will of God.

We know that all things work together for good for those who love God, who are called according to his purpose. For those whom he foreknew he also predestined to be conformed to the image of his Son, in order that he might be the firstborn within a large family. And those whom he predestined he also called; and those whom he called he also justified; and those whom he justified he also glorified.

What then are we to say about these things? If God is for us, who is against us? He who did not withhold his own Son, but gave him up for all of us, will he not with him also give us everything else? Who will bring any charge against God's elect? It is God who justifies. Who is to condemn? It is Christ Jesus, who died, yes, who was raised, who is at the right hand of God, who indeed intercedes for us. Who will separate us from the love of Christ? Will hardship, or distress, or persecution, or famine, or nakedness, or peril, or sword? As it is written, "For your sake we are being killed all day long; we are accounted as sheep to be slaughtered."

No, in all these things we are more than conquerors through him who loved us. For I am convinced that neither death, nor life, nor angels, nor rulers, nor things present, nor things to come, nor powers, nor height, nor depth, nor anything else in all creation, will be able to separate us from the love of God in Christ Jesus our Lord.

R: The Word of the Lord

C: **Thanks be to God**

**GOSPEL ACCLAMATION**

Celtic Alleluia – ELW 174

Al - le - lu - ia, al - le - lu - ia.

Al - le - lu - ia, al - le - lu - ia.

Jesus put before them another parable: "The kingdom of heaven is like a mustard seed that someone took and sowed in his field; it is the smallest of all the seeds, but when it has grown it is the greatest of shrubs and becomes a tree, so that the birds of the air come and make nests in its branches." He told them another parable: "The kingdom of heaven is like yeast that a woman took and mixed in with three measures of flour until all of it was leavened."

The kingdom of heaven is like treasure hidden in a field, which someone found and hid; then in his joy he goes and sells all that he has and buys that field. "Again, the kingdom of heaven is like a merchant in search of fine pearls; on finding one pearl of great value, he went and sold all that he had and bought it. "Again, the kingdom of heaven is like a net that was thrown into the sea and caught fish of every kind; when it was full, they drew it ashore, sat down, and put the good into baskets but threw out the bad. So it will be at the end of the age. The angels will come out and separate the evil from the righteous and throw them into the furnace of fire, where there will be weeping and gnashing of teeth.

"Have you understood all this?" They answered, "Yes." And he said to them, "Therefore every scribe who has been trained for the kingdom of heaven is like the master of a household who brings out of his treasure what is new and what is old."

R: The Gospel of the Lord

C: Praise to you, O Christ

SERMON

Pastor Sam Nelson



1. The reign of God, like farm - er's field, bears  
 2. The reign of God can - not be found in  
 3. The reign of God is like a pearl on  
 4. Though hid - den now, the reign of God may,  
 5. Like mus - tard tree, the reign of God from  
 6. The reign of God is come in Christ; the



weeds a - long with wheat; the good and bad are  
 far - off, for - eign land till in fa - mil - iar  
 bar - ren land con - cealed. If once you find that  
 yet un - no - ticed, grow; from deep with - in it  
 ti - ny seed will spread, till birds of ev - 'ry  
 reign of God is near. A - blaze a - mong us,



in - ter - twined till har - vest is com - plete.  
 face and place we find it close at hand.  
 pre - cious pearl, go out and buy that field.  
 ris - es up, like yeast in swell - ing dough.  
 feath - er come to nest, and there be fed.  
 kin - dling hearts, the reign of God is here!

## PRAYERS OF THE PEOPLE

L: Lord in your mercy,

C: Hear our prayer.

## THE SHARING OF THE PEACE

L: The peace of Christ be with you always,

C: And also with you!

## OFFERING OF OUR GIFTS AND OURSELVES

# MEAL

## GREAT THANKSGIVING

L: The Lord be with you,

C: And also with you.

L: Lift up your hearts,

C: We lift them to the Lord.

L: Let us give thanks to the Lord our God,

C: It is right to give our thanks and praise.

## WORDS OF INSTITUTION

## THE LORD'S PRAYER

ELW pg. 112

**Our Father, who art in heaven, hallowed be thy name,  
thy kingdom come, thy will be done, on earth as it is in heaven.  
Give us this day our daily bread; and forgive us our trespasses,  
as we forgive those who trespass against us;  
and lead us not into temptation, but deliver us from evil.  
For thine is the kingdom, and the power, and the glory,  
forever and ever. Amen.**



# MUSIC DURING COMMUNION

Lamb of God – ELW 195



☐ Lamb of God, you take a - way the sin of the world; have mer-cy on



us. Lamb of God, you take a - way the sin of the world; have



mer-cy on us. Lamb of God, you take a - way the



sin of the world; grant us peace, grant us peace.

## SENDING

ANNOUNCEMENTS

BLESSING

# SENDING HYMN

# Hallelujah! We Sing Your Praises – ELW 535

*Refrain – sung twice each time*



Ha - le - lu - ya! Pe - lo tsa ro - na, di tha -  
Hal - le - lu - jah! We sing your prais - es, all our



bi - le ka - o - fe - la. Ha - le - lu - ya! Pe - lo tsa  
hearts are filled with glad - ness. Hal - le - lu - jah! We sing your



ro - na, di tha - bi - le ka - o - fe - la. *End*  
prais - es, all our hearts are filled with glad - ness.



1 Christ the Lord to us said: I am wine, I am bread,  
2 Now he sends us all out, strong in faith, free of doubt,

*Repeat stanza, then sing refrain*



I am wine, I am bread, give to all who thirst and hun - ger.  
strong in faith, free of doubt. Tell to all the joy - ful gos - pel.

## DISMISSAL

L: Go in peace. Christ is with you.

C: **Thanks be to God!**

## ACKNOWLEDGEMENTS

**Hymn of Praise**" and **"Lamb of God"** from **"Bread of Life"** liturgy, in *With One Voice*. Tunes: Jeremy Young, b. 1948, © 1995 Augsburg Fortress. **"Celtic Alleluia"** - Tune: Fintan O'Carroll and Christopher Walker© 1996 OCP Publications, Inc. **"The Reign of God"** - Text: Delores Dufner, OSB, b. 1939, © 2003 GIA Publications, Inc. Tune MCKEE: African American, adapt. Harry T. Burleigh, 1866-1929, Public Domain. **"Hallelujah! We Sing Your Praises"** - Text: South African, tr. *Freedom Is Coming*. Tune HALELUYAH PELO TSA RONA: South African, arr. *Freedom Is Coming*, © 1984 Walton Music Corp.

For copyrighted selections, all rights reserved. Reprinted under OneLicense.net License No. A-706214. Permission to podcast/stream the music in this service obtained from One License with license #A-706214.

Cover Photo Credit:

[https://books.google.com/books/about/1\\_001\\_Pearls\\_of\\_Teachers\\_Wisdom.html?id=UFiCDwAAQBAJ&source=kp\\_book\\_description](https://books.google.com/books/about/1_001_Pearls_of_Teachers_Wisdom.html?id=UFiCDwAAQBAJ&source=kp_book_description)

# STAFF

---

## **Pastors**

Laura Ziehl  
Sam Nelson

## **Family Ministry Director**

Constance Mithelman

## **Early Childhood Center**

Debi Carr – Full Day Preschool Director  
Gail Winterbourne – Half Day Preschool Director

## **Office Administrator**

Judy Foland

## **Music Ministries**

Mona Goetsch – Director  
Judy Collier – Pianist/Organist

## **Ministries & Programs**

Laure Reynolds – Stephen Ministry  
Rose Moldenhauer – Parish Nurse

Offering gifts can be made electronically, either on our website at [www.blcenc.org](http://www.blcenc.org) by clicking on the contribute tab, or by using the **Give Plus Church** mobile app. There are options for one time donations, as well as recurring gifts and special offerings

**The Mission of Bethlehem Lutheran Church is  
to announce boldly the love of God through Christ.**

# All Are Welcome!

We live in a diverse world. We are hurting, broken and heavy hearted. We are loving, celebrating, and above all — we are welcoming. Regardless of the color of your skin or the color of your hair, regardless of your gender identity, sexual orientation, relationship status, or political affiliation — you are welcome here.

If you are a believer, a doubter or a seeker after Christ — you have a place here.

If you own, rent, or have nothing at all — you are welcome here.

If you are fully abled, disabled, or a person of differing abilities, if you have regrets, fears, addictions, or afflictions — you have a place here.

All who are wise and all who are confused, all who have found love and all who have lost it, all who celebrate this welcome statement and all who fear it — are welcome here.

For these are all of the things that make you who you are: the person God loves. Come as you are and be celebrated for who you are. The time is now. Your place is here. Bethlehem Lutheran Church is an all-inclusive church.



Reconciling in Christ



**Evangelical Lutheran  
Church in America**

God's work. Our hands.

## **Bethlehem Lutheran Church**

925 Balour Drive, Encinitas, CA 92024

760•753•1026 | [info@blcenc.org](mailto:info@blcenc.org) | [www.blcenc.org](http://www.blcenc.org)



**Bethlehem Lutheran Church  
& Early Childhood Center**

## **Electronic Giving Options**

- Give Plus+ App
    - Using your smartphone or tablet, download the “Give Plus+” app from your App Store
    - Search Bethlehem Lutheran Church by name or zip code
    - If you already have an online giving account from the BLC website you can login with that or you can create a new one in the app
  - BLC Website
    - Go to [BLCENC.org](http://BLCENC.org) and select the “Contribute” tab from the top menu
    - Click the “Give Now” button
- \*\*\*\*\*
- With either option you can:
    - Use a checking account, or credit & debit cards
    - Choose to cover the credit card transaction fee
    - Make recurring, or one-time donations
    - Give to general, or various special funds
    - All donations appear on your giving statement

**Thank You for Your Support of BLC!**