



Bethlehem Lutheran Church & Early Childhood Center



Season After Pentecost

Sunday August 9th, 2020

Welcome to Bethlehem!

Greetings and welcome to Bethlehem! Below are a few guidelines to keep in mind as we gather for in-person worship on the lawn. If you are joining us virtually, please feel free to skip ahead two pages; unless you are curious about our new protocol! This list is not meant to be exhaustive, but is supposed to give you an idea of what to expect when you come to worship.

- Please sign up for worship on Sign Up Genius.
- Please watch the orientation video!
- If you have a fever, or any of the following symptoms – cough, breathing problems, chills, muscle pain, sore throat, vomiting, diarrhea, or loss of taste or smell – please enjoy our virtual worship service from your home.
- If you have traveled outside of the great state of California, or flown on a plane, or been exposed to someone with the symptoms listed above, please enjoy our virtual worship service from your home for 14 days.
- Masks will be required at all times, except for children 2 years and under.
- Please maintain social distancing of at least 6 feet from people not in your household.
- Bring any supplies you might need to survive a 45 min outdoor worship service!
 - **Chairs or blankets** (limited handicap seating will be available)
 - Water, hats, sunscreen, umbrellas, and hand sanitizer (some will be available but we'd love for you to bring your own)
 - What you need for communion (prizes for highest quality may be awarded)

- Please print the bulletin at home or bring it on your phone or tablet.
 - A scannable QR code will be available when you arrive if you forget.

- There will be one entrance point near the olive trees and benches. Exits will be located near the MU building and Dot's Garden.

- Ushers will guide you to your seating area. Once you are seated, please refrain from leaving your seating area. Children must remain with their household at all times. Ushers will come and dismiss you when worship has concluded.

- Please refrain from using the bathroom if at all possible (even if the sermon is boring). The bathroom in the MU building will be available for one person to use at a time.
 - Please enter through the door closest to the parking lot.
 - And exit through the door that opens onto the grass.

- Come with an open mind and a gracious heart as we live into this new way of worshipping together. We can't wait to see you!

GATHERING

PRELUDE

WELCOME

OPENING LITANY

L: God in the Spirit revealed in Jesus Christ, calls us by grace.

C: To be renewed in the image of our Creator, that we may be one in divine love for the world.

L: Today is the day God cares for the integrity of creation, wills the healing and wholeness of all life, weeps at the abuse of earth's goodness.

C: And so shall we.

L: Today is the day God embraces all hues of humanity, delights in diversity and difference, favors solidarity transforming strangers into friends

C: And so shall we.

L: Today is the day God calls for nations and peoples to live in peace, celebrates where justice and mercy embrace, exults when the wolf grazes with the lamb.

C: And so shall we. Today is the day God brings good news to the poor, proclaims release to the captives, gives sight to the blind, and sets the oppressed free. And so shall we. Amen.



☐ Glo - ry to God, glo - ry to God, glo - ry to God in the high - est;



glo - ry to God, glo - ry to God, and peace to God's peo - ple on earth.



☐ Lord God, heav - en - ly king, al - migh - ty God and Fa - ther, we



wor - ship you, we give you thanks, we praise you for your glo - ry.



☐ Glo - ry to God, glo - ry to God, glo - ry to God in the high - est;



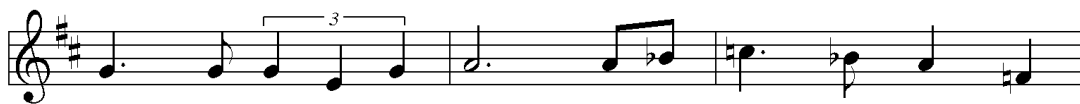
glo - ry to God, glo - ry to God, and peace to God's peo - ple on earth.




☐ Lord Je - sus Christ, on - ly Son of the Fa - ther,




Lord God, Lamb of God, you take a - way the sin of the



world: have mer - cy on us; you are seat - ed at the




right hand of the Fa - ther: re- ceive our prayer.



☒ Glo- ry to God, glo - ry to God, glo - ry to God in the high - est;



glo - ry to God, glo - ry to God, and peace to God's peo- ple on earth,



and peace to God's peo - ple on earth.

PRAYER OF THE DAY

L: Let us pray ...

C: Amen.

CHILDREN'S TIME

WORD

SCRIPTURE READING

Romans 10:5-15

Moses writes concerning the righteousness that comes from the law, that “the person who does these things will live by them.” But the righteousness that comes from faith says, “Do not say in your heart, ‘Who will ascend into heaven?’” (that is, to bring Christ down) “or ‘Who will descend into the abyss?’” (that is, to bring Christ up from the dead). But what does it say?

“The word is near you, on your lips and in your heart” (that is, the word of faith that we proclaim); because if you confess with your lips that Jesus is Lord and believe in your heart that God raised him from the dead, you will be saved. For one believes with the heart and so is justified, and one confesses with the mouth and so is saved. The scripture says, “No one who believes in him will be put to shame.” For there is no distinction between Jew and Greek; the same Lord is Lord of all and is generous to all who call on him. For, “Everyone who calls on the name of the Lord shall be saved.”

But how are they to call on one in whom they have not believed? And how are they to believe in one of whom they have never heard? And how are they to hear without someone to proclaim him? And how are they to proclaim him unless they are sent? As it is written, “How beautiful are the feet of those who bring good news!”

See, I made him a witness to the peoples, a leader and commander for the peoples. See, you shall call nations that you do not know, and nations that do not know you shall run to you, because of the Lord your God, the Holy One of Israel, for he has glorified you.

R: The Word of the Lord

C: **Thanks be to God**

GOSPEL ACCLAMATION

Celtic Alleluia – ELW 174

Al - le - lu - ia, al - le - lu - ia.

Al - le - lu - ia, al - le - lu - ia.

Immediately he made the disciples get into the boat and go on ahead to the other side, while he dismissed the crowds. And after he had dismissed the crowds, he went up the mountain by himself to pray. When evening came, he was there alone, but by this time the boat, battered by the waves, was far from the land, for the wind was against them. And early in the morning he came walking toward them on the sea. But when the disciples saw him walking on the sea, they were terrified, saying, "It is a ghost!" And they cried out in fear. But immediately Jesus spoke to them and said, "Take heart, it is I; do not be afraid."

Peter answered him, "Lord, if it is you, command me to come to you on the water." He said, "Come." So Peter got out of the boat, started walking on the water, and came toward Jesus. But when he noticed the strong wind, he became frightened, and beginning to sink, he cried out, "Lord, save me!" Jesus immediately reached out his hand and caught him, saying to him, "You of little faith, why did you doubt?" When they got into the boat, the wind ceased. And those in the boat worshiped him, saying, "Truly you are the Son of God."

R: The Gospel of the Lord

C: **Praise to you, O Christ**

SERMON

Pastor Sam Nelson



1. Pre - cious Lord, take my hand, Lead me on, let me
 2. When my way grows drear, Pre - cious Lord, lin - ger
 3. When the dark - ness ap - pears And the night draws



stand, I am tired, I am weak, I am worn.
 near, When my life is al - most gone,
 near, And the day is past and gone,



Through the storm, through the night, Lead me on to the
 Hear my cry, hear my call, Hold my hand lest I
 At the riv - er I stand, Guide my feet, hold my



light, Take my hand, pre - cious Lord, lead me home.
 fall. Take my hand, pre - cious Lord, lead me home.
 hand. Take my hand, pre - cious Lord, lead me home.

PRAYERS OF THE PEOPLE

L: Lord in your mercy,

C: Hear our prayer.

THE SHARING OF THE PEACE

L: The peace of Christ be with you always,

C: And also with you!

OFFERING OF OUR GIFTS AND OURSELVES

OFFERTORY RESPONSE

As the Grains of Wheat – ELW 465



As the grains of wheat once scat-tered on the hill were



gath-ered in-to one to be - come our bread; so may all your peo-ple from



all the ends of earth be gath-ered in - to one in you.



1 As this cup of bless-ing is shared with-in our midst,

2 Let this be a fore-taste of all that is to come when



may we share the pres - ence of your love.
all cre - a - tion shares this feast with you.

Refrain

MEAL

GREAT THANKSGIVING

L: The Lord be with you,

C: And also with you.

L: Lift up your hearts,

C: We lift them to the Lord.

L: Let us give thanks to the Lord our God,

C: It is right to give our thanks and praise.

WORDS OF INSTITUTION

THE LORD'S PRAYER

ELW pg. 112

Our Father, who art in heaven,

hallowed be thy name,

thy kingdom come, thy will be done,

on earth as it is in heaven.

Give us this day our daily bread;

and forgive us our trespasses,

as we forgive those who trespass against us;

and lead us not into temptation, but deliver us from evil.

For thine is the kingdom,

and the power, and the glory,

forever and ever. Amen.

MUSIC DURING COMMUNION

Lamb of God – ELW 195



☐ Lamb of God, you take a - way the sin of the world; have mer-cy on



us. Lamb of God, you take a - way the sin of the world; have



mer-cy on us. Lamb of God, you take a - way the



sin of the world; grant us peace, grant us peace.

SENDING

ANNOUNCEMENTS

BLESSING

SENDING HYMN

Drawn to the Light – ELW 593



1 Peo - ple who walk in dark - ness have sought a light in the
 2 How can we tell a heav - en from hell if ev - 'ry - one
 3 Where is the sun? Oh, there will be none! The Lamb is the



heart of the dark - est night. Just when we thought all would be
 dwells in the dark of night? Morn - ing dis - pels, gent - ly com -
 one who is shin - ing bright, bids us to come! Life has be -



lost, we were drawn to the light of God.
 pels, and we're drawn to the light of God.
 gun when we're drawn to the light of God.



Refrain
 Dawn is in sight! Gone is the night, drawn to the



light and the morn - ing. Glo - rious and bright, oh, what a



sight to be drawn to the light of God.

DISMISSAL

L: Go in peace. Christ is with you.

C: Thanks be to God!

ACKNOWLEDGEMENTS

"Hymn of Praise" and **"Lamb of God"** from **"Bread of Life"** liturgy, in *With One Voice*. Tunes: Jeremy Young, b. 1948, © 1995 Augsburg Fortress. **"Celtic Alleluia"** - Tune: Fintan O'Carroll and Christopher Walker© 1996 OCP Publications, Inc. **"As the Grains of Wheat"** - Text and Tune AS THE GRAINS: Marty Haugen, b. 1950, © 1990, GIA Publications, Inc. **"Precious Lord, Take My Hand"** - Text: Thomas A. Dorsey, 1899-1993. Tune PRECIOUS LORD: George N. Allen, 1812-1877, adapt. Thomas A. Dorsey. Both © 1966 Hal Leonard Corp. **"Drawn to the Light"** - Text and Tune LA CROSSE: John C. Ylvisaker, b. 1937, © John C. Ysvisaker.

Cover Photo Credit:

https://books.google.com/books/about/1_001_Pearls_of_Teachers_Wisdom.html?id=UFiCDwAAQBAJ&source=kp_book_description

STAFF

Pastors

Laura Ziehl
Sam Nelson

Family Ministry Director

Constance Mithelman

Early Childhood Center

Debi Carr – Full Day Preschool Director
Gail Winterbourne – Half Day Preschool Director

Office Administrator

Judy Foland

Music Ministries

Mona Goetsch – Director
Judy Collier – Pianist/Organist

Ministries & Programs

Laure Reynolds – Stephen Ministry
Rose Moldenhauer – Parish Nurse

Offering gifts can be made electronically, either on our website at www.blcenc.org by clicking on the contribute tab, or by using the **Give Plus Church** mobile app. There are options for one time donations, as well as recurring gifts and special offerings

**The Mission of Bethlehem Lutheran Church is
to announce boldly the love of God through Christ.**

All Are Welcome!

We live in a diverse world. We are hurting, broken and heavy hearted. We are loving, celebrating, and above all — we are welcoming. Regardless of the color of your skin or the color of your hair, regardless of your gender identity, sexual orientation, relationship status, or political affiliation — you are welcome here.

If you are a believer, a doubter or a seeker after Christ — you have a place here.

If you own, rent, or have nothing at all — you are welcome here.

If you are fully abled, disabled, or a person of differing abilities, if you have regrets, fears, addictions, or afflictions — you have a place here.

All who are wise and all who are confused, all who have found love and all who have lost it, all who celebrate this welcome statement and all who fear it — are welcome here.

For these are all of the things that make you who you are: the person God loves. Come as you are and be celebrated for who you are. The time is now. Your place is here. Bethlehem Lutheran Church is an all-inclusive church.



Reconciling in Christ



**Evangelical Lutheran
Church in America**

God's work. Our hands.

Bethlehem Lutheran Church

925 Balour Drive, Encinitas, CA 92024

760•753•1026 | info@blcenc.org | www.blcenc.org



**Bethlehem Lutheran Church
& Early Childhood Center**

Electronic Giving Options

- Give Plus+ App
 - Using your smartphone or tablet, download the “Give Plus+” app from your App Store
 - Search Bethlehem Lutheran Church by name or zip code
 - If you already have an online giving account from the BLC website you can login with that or you can create a new one in the app
 - BLC Website
 - Go to BLCENC.org and select the “Contribute” tab from the top menu
 - Click the “Give Now” button
- *****
- With either option you can:
 - Use a checking account, or credit & debit cards
 - Choose to cover the credit card transaction fee
 - Make recurring, or one-time donations
 - Give to general, or various special funds
 - All donations appear on your giving statement

Thank You for Your Support of BLC!