



# Bethlehem Lutheran Church & Early Childhood Center



Season After Pentecost

Sunday July 12<sup>th</sup>, 2020

# GATHERING

## PRELUDE

## WELCOME

## OPENING LITANY

L: God in the Spirit revealed in Jesus Christ, calls us by grace.

**C: To be renewed in the image of our Creator, that we may be one in divine love for the world.**

L: Today is the day God cares for the integrity of creation, wills the healing and wholeness of all life, weeps at the abuse of earth's goodness.

**C: And so shall we.**

L: Today is the day God embraces all hues of humanity, delights in diversity and difference, favors solidarity transforming strangers into friends

**C: And so shall we.**

L: Today is the day God calls for nations and peoples to live in peace, celebrates where justice and mercy embrace, exults when the wolf grazes with the lamb.

**C: And so shall we. Today is the day God brings good news to the poor, proclaims release to the captives, gives sight to the blind, and sets the oppressed free. And so shall we. Amen.**



☐ Glo - ry to God, glo - ry to God, glo - ry to God in the high - est;



glo - ry to God, glo - ry to God, and peace to God's peo - ple on earth.



☐ Lord God, heav - en - ly king, al - migh - ty God and Fa - ther, we



wor - ship you, we give you thanks, we praise you for your glo - ry.



☐ Glo - ry to God, glo - ry to God, glo - ry to God in the high - est;



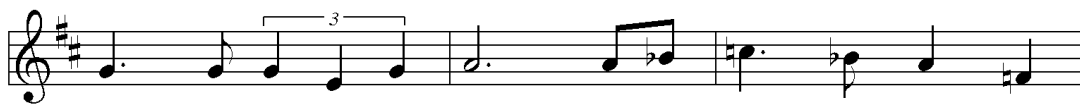
glo - ry to God, glo - ry to God, and peace to God's peo - ple on earth.



☐ Lord Je - sus Christ, on - ly Son of the Fa - ther,



Lord God, Lamb of God, you take a - way the sin of the



world: have mer - cy on us; you are seat - ed at the

right hand of the Fa - ther: re- ceive our prayer.

☒ Glo- ry to God, glo - ry to God, glo - ry to God in the high - est;

glo - ry to God, glo - ry to God, and peace to God's peo- ple on earth,

and peace to God's peo - ple on earth.

## PRAYER OF THE DAY

L: Let us pray ...

C: Amen.

## CHILDREN'S TIME

# WORD

## SCRIPTURE READING

Isaiah 55:10-13

For as the rain and the snow come down from heaven, and do not return there until they have watered the earth, making it bring forth and sprout, giving seed to the sower and bread to the eater, so shall my word be that goes out from my mouth; it shall not return to me empty, but it shall accomplish that which I purpose, and succeed in the thing for which I sent it. For you shall go out in joy, and be led back in peace; the mountains and the hills before you shall burst into song, and all the trees of the field shall clap their hands. Instead of the thorn shall come up the cypress; instead of the brier shall come up the myrtle; and it shall be to the Lord for a memorial, for an everlasting sign that shall not be cut off.

R: The Word of the Lord

C: **Thanks be to God**

## GOSPEL ACCLAMATION

Celtic Alleluia – ELW 174



Al - le - lu - ia, al - le - lu - ia.  
Al - le - lu - ia, al - le - lu - ia.

The image shows two staves of musical notation for a Celtic Alleluia. Both staves are in the treble clef and the key signature of D major (two sharps). The melody is written in a simple, folk-like style with a mix of eighth and quarter notes, some with slurs. The lyrics 'Al - le - lu - ia, al - le - lu - ia.' are written below the notes. The first staff ends with a double bar line, and the second staff also ends with a double bar line.

That same day Jesus went out of the house and sat beside the sea. Such great crowds gathered around him that he got into a boat and sat there, while the whole crowd stood on the beach. And he told them many things in parables, saying: "Listen! A sower went out to sow. And as he sowed, some seeds fell on the path, and the birds came and ate them up. Other seeds fell on rocky ground, where they did not have much soil, and they sprang up quickly, since they had no depth of soil. But when the sun rose, they were scorched; and since they had no root, they withered away. Other seeds fell among thorns, and the thorns grew up and choked them. Other seeds fell on good soil and brought forth grain, some a hundredfold, some sixty, some thirty. Let anyone with ears listen!"

"Hear then the parable of the sower. When anyone hears the word of the kingdom and does not understand it, the evil one comes and snatches away what is sown in the heart; this is what was sown on the path. As for what was sown on rocky ground, this is the one who hears the word and immediately receives it with joy; yet such a person has no root, but endures only for a while, and when trouble or persecution arises on account of the word, that person immediately falls away. As for what was sown among thorns, this is the one who hears the word, but the cares of the world and the lure of wealth choke the word, and it yields nothing. But as for what was sown on good soil, this is the one who hears the word and understands it, who indeed bears fruit and yields, in one case a hundredfold, in another sixty, and in another thirty."

R: The Gospel of the Lord

C: **Praise to you, O Christ**

SERMON

Pastor Sam Nelson



Lord, let my heart be good soil, o-pen to the seed of your word.



Lord, let my heart be good soil, where love can grow and peace is un-der-stood.



When my heart is hard, break the stone a - way. When my heart is cold,



warm it with the day. When my heart is lost, lead me on your way.



Lord, let my heart, Lord, let my heart, Lord, let my heart be good soil.

## PRAYERS OF THE PEOPLE

L: Lord in your mercy,

C: Hear our prayer.

## THE SHARING OF THE PEACE

L: The peace of Christ be with you always,

C: And also with you!

## OFFERING OF OUR GIFTS AND OURSELVES

# MEAL

## GREAT THANKSGIVING

L: The Lord be with you,

C: And also with you.

L: Lift up your hearts,

C: We lift them to the Lord.

L: Let us give thanks to the Lord our God,

C: It is right to give our thanks and praise.

## WORDS OF INSTITUTION

## THE LORD'S PRAYER

ELW pg. 112

**Our Father, who art in heaven, hallowed be thy name,  
thy kingdom come, thy will be done, on earth as it is in heaven.**

**Give us this day our daily bread; and forgive us our trespasses,  
as we forgive those who trespass against us;**

**and lead us not into temptation, but deliver us from evil.**

**For thine is the kingdom, and the power, and the glory,  
forever and ever. Amen.**



## MUSIC DURING COMMUNION

Lamb of God – ELW 195



☐ Lamb of God, you take a - way the sin of the world; have mer-cy on



us. Lamb of God, you take a - way the sin of the world; have



mer-cy on us. Lamb of God, you take a - way the



sin of the world; grant us peace, grant us peace.

## SENDING

ANNOUNCEMENTS

BLESSING

SENDING HYMN

Build Us Up, Lord – ELW 670



1 Build us up, Lord, build us up; set in  
 2 Build us up, Lord, build us up; let our



us a strong foun - da - tion. Lead us to do your  
 lives re - flect your glo - ry. Cast a - way all our



ho - ly will; form and shape your new cre - a - tion.  
 doubts and fears; help us tell the world your sto - ry.



Build us up, Lord, build us up; as we  
 Build us up, Lord, build us up; help us



guide and teach each oth - er, help us to share your love with the  
 bear good fruit for you, Lord, give us vi - sion and keep us



world: ev - 'ry sis - ter, ev - 'ry broth - er.  
 sure. Grant us faith that's stead - fast and true.

*Refrain*



Grow - ing in Christ, we plant seeds for the king - dom; we fol - low in



faith what's be - gun! Lord, set in our hearts the pow'r of your



word to spread the news of your Son!

## DISMISSAL

L: Go in peace. Christ is with you.

C: **Thanks be to God!**

## ACKNOWLEDGEMENTS

“**Hymn of Praise**” and “**Lamb of God**” from “**Bread of Life**” liturgy, in *With One Voice*. Tunes: Jeremy Young, b. 1948, © 1995 Augsburg Fortress. “**Celtic Alleluia**” - Tune: Fintan O'Carroll and Christopher Walker © 1996 OCP Publications, Inc. “**Lord, Let My Heart Be Good Soil**” - Text and Tune: Handt Hanson, b. 1950, © 1985 Augsburg Fortress. “**Build Us Up, Lord**” - Text and Tune: Mark Glaeser, b. 1956, and Donna Hanna, b. 1952, © 2003 Augsburg Fortress. All rights reserved. Reprinted under OneLicense.net License No. A-706214. Permission to podcast/stream the music in this service obtained from One License with license #A-706214.

Cover Photo Credit: <https://malcolmguite.wordpress.com/tag/parable-of-the-sower/>

# STAFF

---

## **Pastors**

Laura Ziehl  
Sam Nelson

## **Family Ministry Director**

Constance Mithelman

## **Early Childhood Center**

Debi Carr – Full Day Preschool Director  
Gail Winterbourne – Half Day Preschool Director

## **Office Administrator**

Judy Foland

## **Music Ministries**

Mona Goetsch – Director  
Judy Collier – Pianist/Organist

## **Ministries & Programs**

Laure Reynolds – Stephen Ministry  
Rose Moldenhauer – Parish Nurse

Offering gifts can be made electronically, either on our website at [www.blcenc.org](http://www.blcenc.org) by clicking on the contribute tab, or by using the **Give Plus Church** mobile app. There are options for one time donations, as well as recurring gifts and special offerings

**The Mission of Bethlehem Lutheran Church is  
to announce boldly the love of God through Christ.**

# All Are Welcome!

We live in a diverse world. We are hurting, broken and heavy hearted. We are loving, celebrating, and above all — we are welcoming. Regardless of the color of your skin or the color of your hair, regardless of your gender identity, sexual orientation, relationship status, or political affiliation — you are welcome here.

If you are a believer, a doubter or a seeker after Christ — you have a place here.

If you own, rent, or have nothing at all — you are welcome here.

If you are fully abled, disabled, or a person of differing abilities, if you have regrets, fears, addictions, or afflictions — you have a place here.

All who are wise and all who are confused, all who have found love and all who have lost it, all who celebrate this welcome statement and all who fear it — are welcome here.

For these are all of the things that make you who you are: the person God loves. Come as you are and be celebrated for who you are. The time is now. Your place is here. Bethlehem Lutheran Church is an all-inclusive church.



Reconciling in Christ



**Evangelical Lutheran  
Church in America**

God's work. Our hands.

## **Bethlehem Lutheran Church**

925 Balour Drive, Encinitas, CA 92024

760•753•1026 | [info@blcenc.org](mailto:info@blcenc.org) | [www.blcenc.org](http://www.blcenc.org)



Bethlehem Lutheran Church  
& Early Childhood Center

## Electronic Giving Options

- Give Plus+ App
    - Using your smartphone or tablet, download the “Give Plus+” app from your App Store
    - Search Bethlehem Lutheran Church by name or zip code
    - If you already have an online giving account from the BLC website you can login with that or you can create a new one in the app
  - BLC Website
    - Go to [BLCENC.org](http://BLCENC.org) and select the “Contribute” tab from the top menu
    - Click the “Give Now” button
- \*\*\*\*\*
- With either option you can:
    - Use a checking account, or credit & debit cards
    - Choose to cover the credit card transaction fee
    - Make recurring, or one-time donations
    - Give to general, or various special funds
    - All donations appear on your giving statement

**Thank You for Your Support of BLC!**